



**Version 1.0.3**  
**Revision 2 (updated install)**  
**For Pocket PC**

**Pleco Software Incorporated**  
**[www.pleco.com](http://www.pleco.com)**

Introduction.....	4
System Requirements .....	5
Installation .....	6
Before You Install.....	6
Installing PlecoDict.....	7
Installation on Windows Mobile 2003.....	8
Installing the Demo Version.....	8
Upgrading from the Demo to the Paid Version .....	12
Reinstalling the Paid Version of PlecoDict .....	14
Installation on Windows Mobile 5.....	15
Installing the Demo Version.....	15
Upgrading from the Demo to the Paid Version .....	18
Reinstalling the Paid Version of PlecoDict .....	20
Manual Installation .....	21
Tutorial.....	24
Starting the program .....	24
Your first search.....	24
Handwriting input .....	26
Radical Input.....	27
More searches .....	28
Flashcards .....	31
Reference .....	38
Main Interface.....	38
Searching.....	39
Pinyin Search .....	39
Character Search.....	40
Handwriting Input.....	40
Radical Input.....	42
Alternate Radical/Handwriting Input.....	43
Wildcard Search.....	45
Mixed Search .....	46
Toolbar and Menu Commands.....	46
Navigation.....	48
Instant Access .....	51
Flashcards .....	51
Introduction.....	51
Creating and Editing Cards.....	52
Import and Export.....	54
Reviewing and Testing .....	57
Flashcard Session.....	57
Rank Settings .....	60
Flag Settings.....	61
Test Settings.....	62
Card Settings.....	63
Custom Dictionary Entries.....	64
Preferences.....	65

Navigation.....	66
Search.....	67
Characters .....	68
Toolbar .....	70
Input .....	71
Flashcards .....	72
Ordering / Demo Version.....	74
Version History.....	75
Abbreviations Used.....	78
Copyrights.....	81
Software License.....	82

# Introduction

Welcome to PlecoDict!

You've just discovered/downloaded/purchased one of the world's best tools for learning Chinese. Over three years in the making and the result of feedback from thousands of users, PlecoDict is the premiere Chinese dictionary product for handheld computers, boasting a world-class Chinese handwriting recognizer, flexible powerful search capabilities, a highly customizable user interface, and a full-featured flashcard system among its many great features.

PlecoDict comes bundled with any of these 3 outstanding dictionaries:

The **Oxford Concise English & Chinese Dictionary**, published by Oxford University Press, is one of the most popular Chinese-English translation dictionaries in the world. It was originally published in 1986; PlecoDict's data files are based on the new 3rd Edition, published in 2003 and incorporating recent vocabulary words like 'Internet' and 'SARS'. It includes both a Chinese-to-English and an English-to-Chinese component, containing 25,000 and 13,000 entries respectively.

The **ABC Chinese-English Comprehensive Dictionary**, also published in 2003, edited by the legendary John DeFrancis with the collaboration of Wenlin Institute and others, is the most comprehensive single-volume Chinese-to-English dictionary available, containing over 196,000 entries with comprehensive coverage of all contemporary Chinese vocabulary. It's also used in Wenlin Institute's Wenlin 3.2 software, which makes an excellent desktop counterpart to PlecoDict.

The **New World Press English-Chinese Pinyin Dictionary** (NWP), published in 2001, is one of the few English-to-Chinese dictionaries in Mainland China developed specifically for foreign learners of Chinese; it contains approximately 23,000 entries.

The **Cheng & Tsui English-Chinese Lexicon of Business Terms**, an English-to-Chinese dictionary published in 2002 and compiled by Professor Andrew Chang of Thunderbird business school, is one of the few Chinese business dictionaries to include Pinyin, and (as far as we know) the only one to be developed in the US. It contains 3845 entries covering over 9000 common business terms like "expansionary monetary policy" and "FOB contract."

# System Requirements

PlecoDict for Pocket PC requires a PDA running **Pocket PC 2003** or later. It will not work on other Windows CE devices or on older versions of the Pocket PC operating system. PlecoDict fully supports VGA screens, and icons and text will all display in high resolution on VGA Pocket PCs; however, rendering Chinese characters in VGA resolution tends to slow PlecoDict down significantly, so for the best possible performance we recommend sticking with a low-resolution model. PlecoDict is compatible with the new Windows Mobile 5.

PlecoDict also requires at least **40 MB** of storage space for its data files, of which at least **10 MB** must be in your Pocket PC's main memory. Due to a bug in Windows CE, putting PlecoDict's handwriting recognition engine or font files on an SD or CF storage card can cause stability problems, so while it is possible to put all of PlecoDict's data files on a card, we strongly discourage you from doing so. Our automated installer program automatically puts the fonts and handwriting engine in main memory (even if the other files are installed to a card).

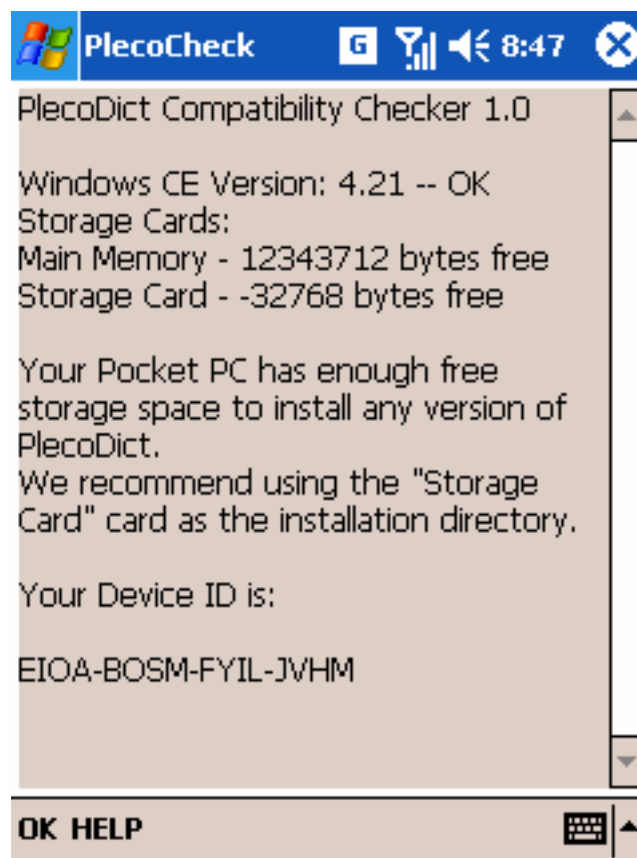
The easiest way to verify if your Pocket PC meets PlecoDict's system requirements is to run our free PlecoCheck utility; see the next page for details on that.

# Installation

## Before You Install

PlecoDict's data files are very large, so it may not fit into the built-in memory of your Palm OS handheld. Before you install PlecoDict, it's a good idea to check the available memory on your Palm, and delete files or add a memory expansion card if needed.

**1) Check Memory.** The easiest way to do this is to use the PlecoCheck utility, available on our website at <http://www.pleco.com/ppcdownload.html>. Install and run PlecoCheck to bring up this screen on your Pocket PC:



This will tell you whether or not you have enough free memory to install PlecoDict. If you only have enough memory for the Basic version (smaller dictionaries), that will be listed here as well.

**2) Take Action.** If you don't have enough free space in your Pocket PC to install PlecoDict, you can try these steps to increase the space available:

a) Delete some files. Open the Start Menu on your Pocket PC and select "Settings", choose the "System" tab and the "Remove Programs" panel. If you see any programs listed there that you're no longer using, select them and press "Remove" to remove them from your Pocket PC.

You can also free up space on your storage card by deleting files on it using File Explorer. Go to the Start Menu, select “Programs” and “File Explorer” and navigate to your storage card. To delete a file, tap-hold the stylus on the filename until a menu pops up, then select “Delete” from that menu.

b) Get a new flash memory card. We recommend purchasing a card with at least **128 MB** of space; these can generally be found for US\$15-\$20 at an electronics or photo store. If you already have a memory card but it doesn’t have enough space to install PlecoDict, purchase a new card with at least **64 MB more space** than your old one. Virtually all Pocket PCs come with **SD** (Secure Digital) Card slots, but some also include **CF** (Compact Flash) slots; PlecoDict can use either, so if one slot is already in use, you can purchase a card for the other slot and use both simultaneously.

c) Get a new handheld. We don’t currently have any specific recommendations for which Pocket PC handheld to buy, but see the “System Requirements” section above; just about any Pocket PC sold new today should meet those requirements, and beyond that it’s largely a matter of personal preference which model to buy. Microsoft is very rigorous about enforcing standards across all Pocket PC manufacturers, so any model that meets the system requirements should be able to run our software.

## **Installing PlecoDict**

The procedure for downloading and installing PlecoDict will vary depending on the operating system of your Pocket PC and of your desktop computer.

If your Pocket PC is running **Windows Mobile 2003**, continue on the next page.

If your Pocket PC is running **Windows Mobile 5**, continue on page 15.

If you’re not sure what version of Windows Mobile your Pocket PC is running, tap on the Start menu, choose “Settings,” select the “System” tab, and tap on the “About” icon. If the first line of that screen is “Microsoft Pocket PC” or “Windows Mobile 2003 Second Edition”, you’re using **Windows Mobile 2003**. If the first line of that screen is “Microsoft Windows Mobile Version 5”, you’re using **Windows Mobile 5**.

If you encounter problems with a normal installation, are running Mac OS or Linux, or want to install PlecoDict’s font files to a storage card instead of to main memory, follow the **Custom Install** instructions on page 21.

## Installation on Windows Mobile 2003

If you want to install the demo version, continue on this page.

If you've just purchased PlecoDict and want to unlock the demo version, continue on page 12.

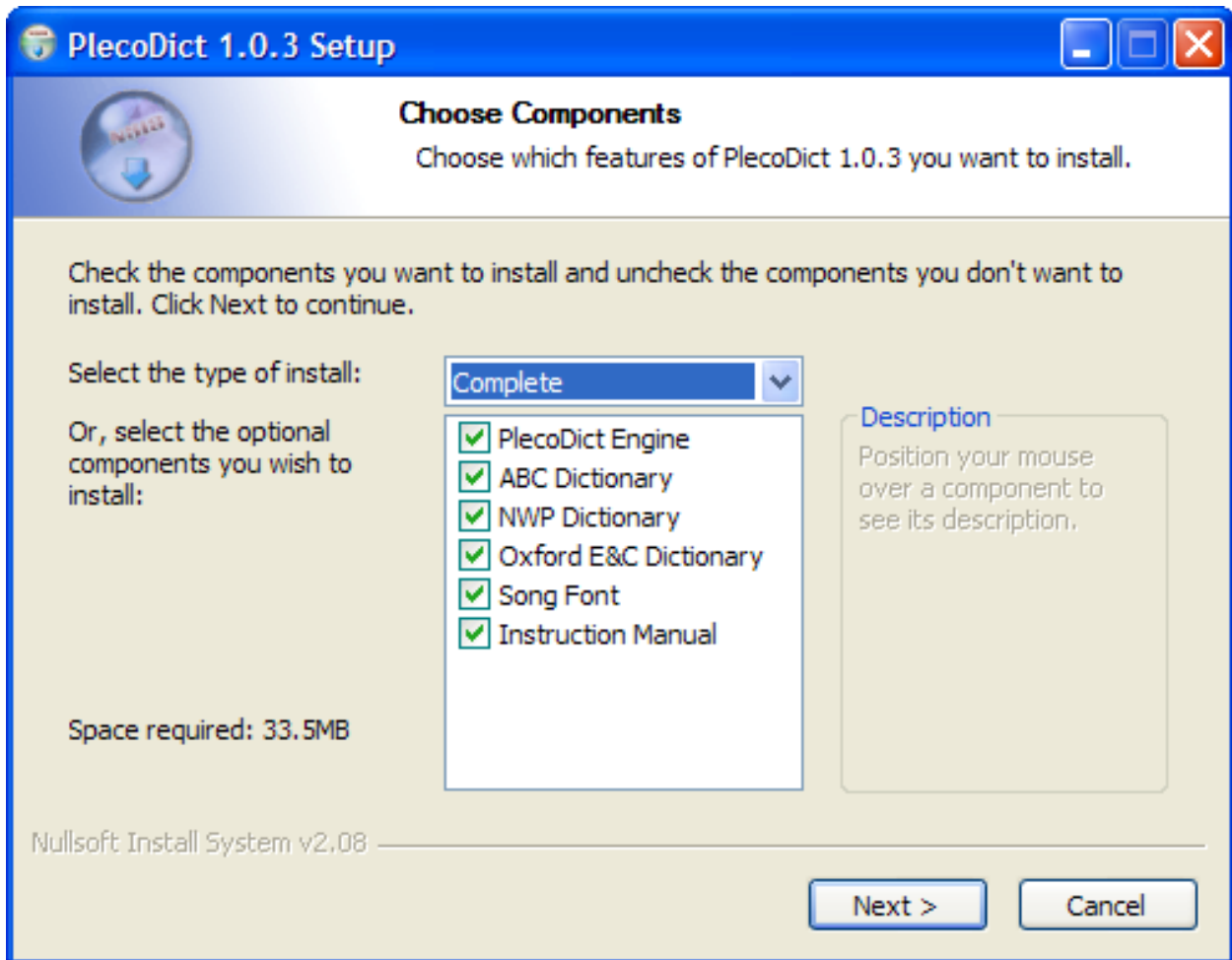
If you've previously purchased PlecoDict and want to reinstall the paid version, continue on page 14.

### *Installing the Demo Version*

1) Visit <http://www.pleco.com/ppcdownload.html> to download the demo version of PlecoDict. You can choose from two different download options:

- **Complete/Professional:** includes all available dictionaries
- **Basic:** includes only the Oxford Concise dictionaries (but downloads faster)

2) You should now have a file called "pccomplete103.exe" or "pcbasic103.exe" on your desktop. Double-click on it to bring up this installation screen:



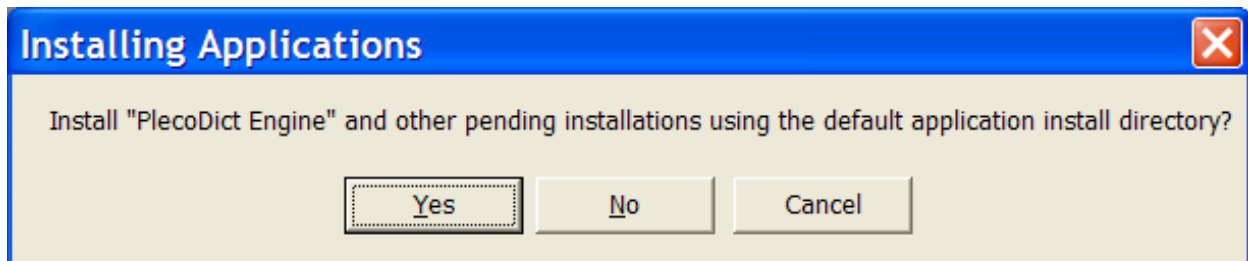


Select the version of PlecoDict you're interested in purchasing from the menu at the top of the screen, or check the boxes for the specific features you wish to install. Here's what each of those features does:

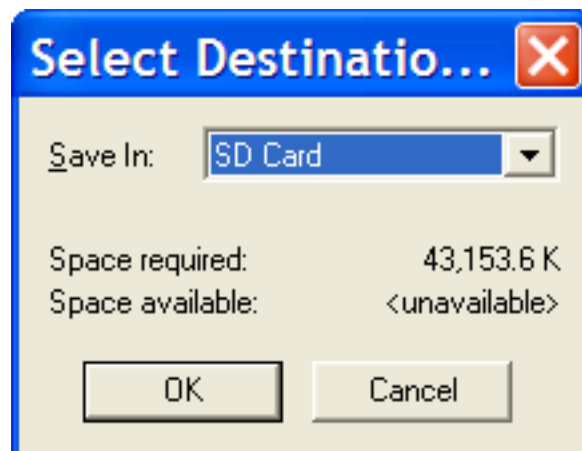
- **PlecoDict Engine:** The main program, data files, and handwriting recognizer for PlecoDict. Always install this.
- **ABC Dictionary:** The ABC Chinese-English Comprehensive Dictionary. Install this for PlecoDict Professional or Complete.
- **NWP Dictionary:** The NWP English-Chinese Pinyin Dictionary. Install this for PlecoDict Professional or Complete.
- **Oxford E&C Dictionary:** The Oxford Concise English-Chinese and Chinese-English Dictionaries. Install this for PlecoDict Basic or Complete.
- **Song Font:** Chinese font file for PlecoDict. Always install this, unless your Pocket PC already has a Chinese font installed.
- **Instruction Manual:** Puts a copy of the PlecoDict instruction manual on your PC's hard drive. You can access it through the Start Menu.

Once you've finished selecting files, press Next. Press Install on the next screen to begin installation.

3) After a few seconds, this screen should come up (it's OK if the file name is different, the correct software will still install):

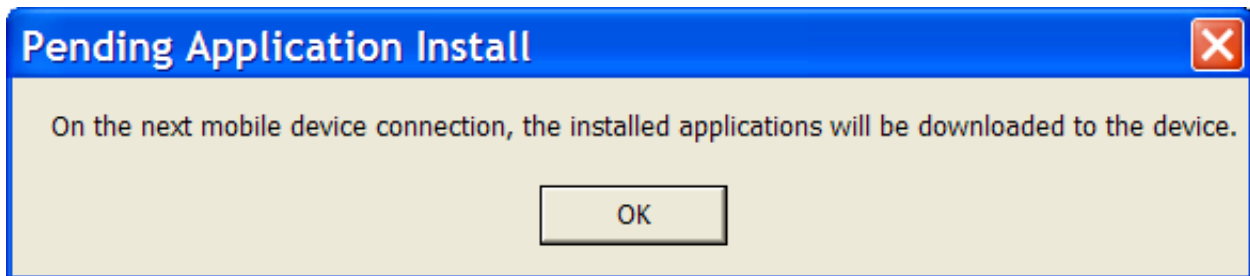


**IMPORTANT:** press "No" here - you DO NOT want to install to the default installation directory. That will bring up this screen:



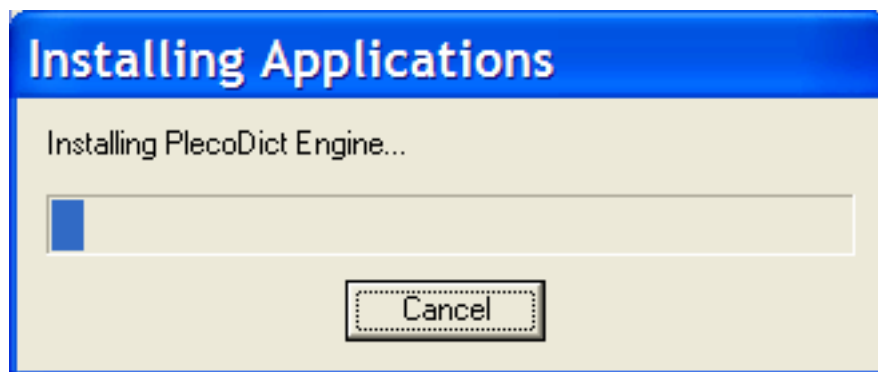
You will want to choose the "Storage Card" directory from the "Save In" menu. It may also be called "CF Card" or "SD Card" or "Memory Card" or something similar, depending on your Pocket PC's manufacturer. If no card is available, you can also select "Main Memory" to install PlecoDict to your Pocket PC's internal memory; however, there may not be sufficient free space to install PlecoDict there, so we strongly recommend using a memory card for installation.

You might see a screen that looks like this come up instead of the above two screens:



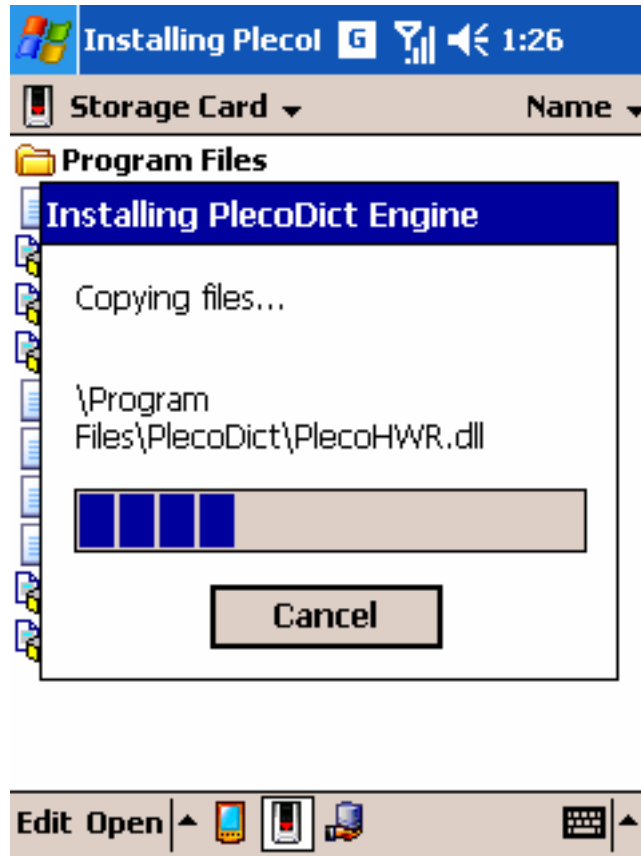
In that case, connect your Pocket PC to your computer and the correct screen should appear.

4) This screen will now appear as the files copy over to your Pocket PC:



The file copying process may take several minutes, so be patient.

5) After a few seconds, this screen should appear on your Pocket PC:

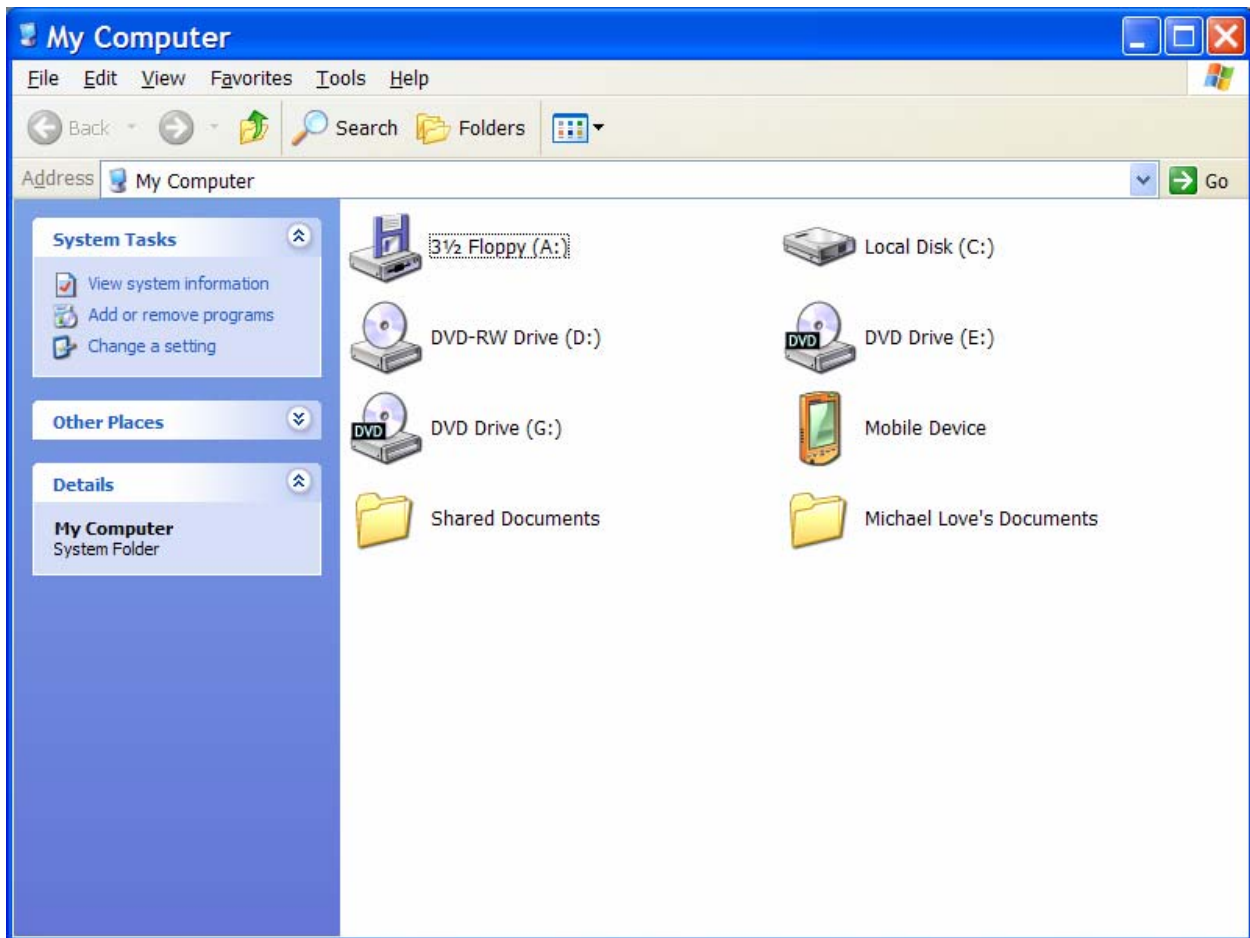


You're almost done, keep waiting until the installation finishes. (it may go through several progress bars)

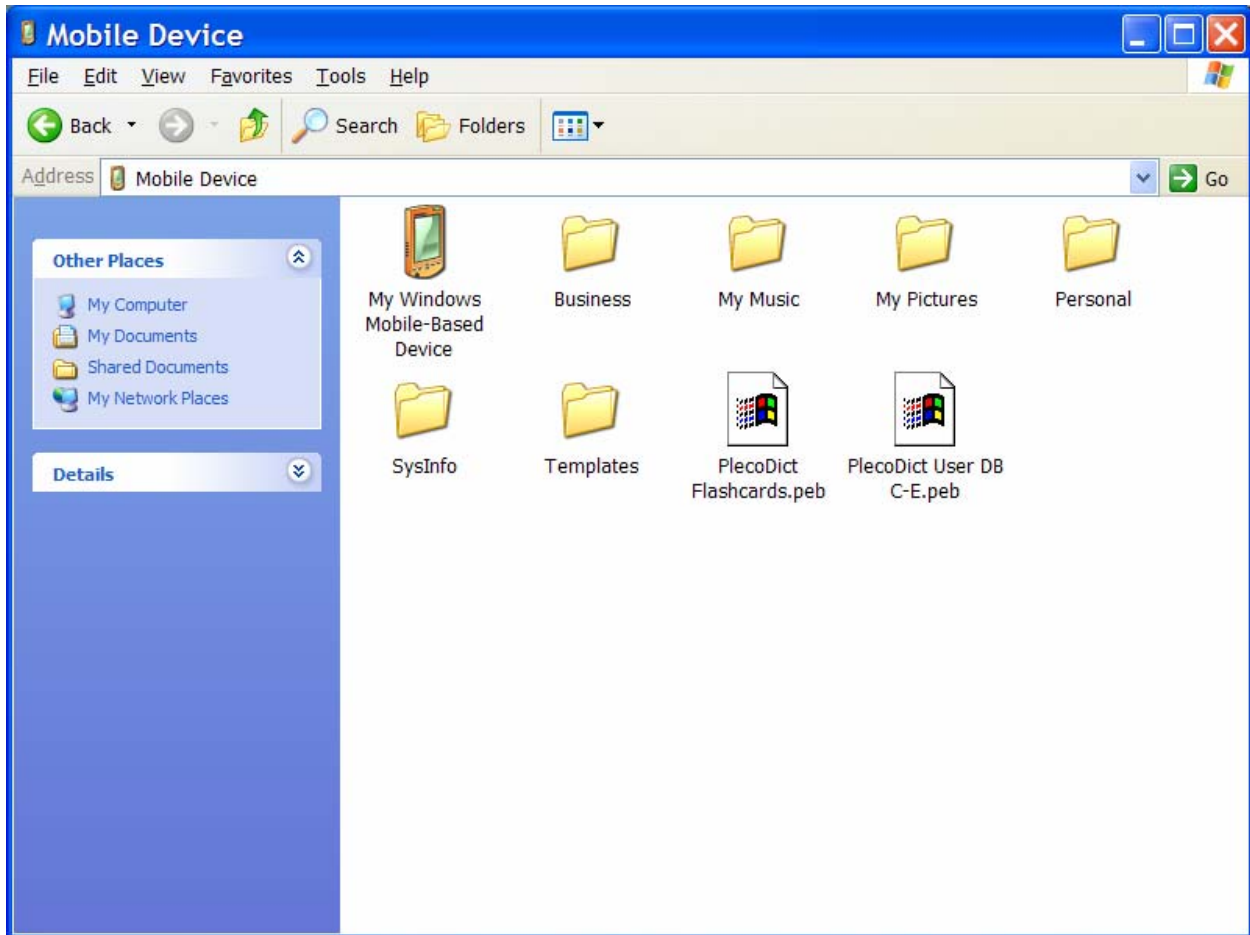
6) Finally, go to the Start menu and "Programs" and there should be an icon for PlecoDict. Tap on that icon to launch the software.

## Upgrading from the Demo to the Paid Version

1) Install your PlecoDict keyfile. It should be attached to your order confirmation e-mail; you can also download it from My Orders (<http://www.pleco.com/orders.html>). After you've downloaded the file, connect your Pocket PC to your desktop computer and open up My Computer:



Double-click on the "Mobile Device" icon to bring up this screen:



Drag the keyfile into this window (which is actually your Pocket PC's "My Documents" folder) to copy it to your Pocket PC.

2) You're done! (that was easy) Go into "Programs" in the Start Menu and click on the PlecoDict icon to open PlecoDict. A message will appear thanking you for your purchase, and you should now have access to all of PlecoDict's capabilities.

### *Reinstalling the Paid Version of PlecoDict*

The data files for the demo and paid versions of PlecoDict are identical, so just follow the steps under “Installing the Demo Version” (page 8) and then the steps under “Upgrading from the Demo to the Paid Version” (page 12) to reinstall the paid-version software.

## Installation on Windows Mobile 5

If you want to install the demo version, continue on this page.

If you've just purchased PlecoDict and want to unlock the demo version, continue on page 18.

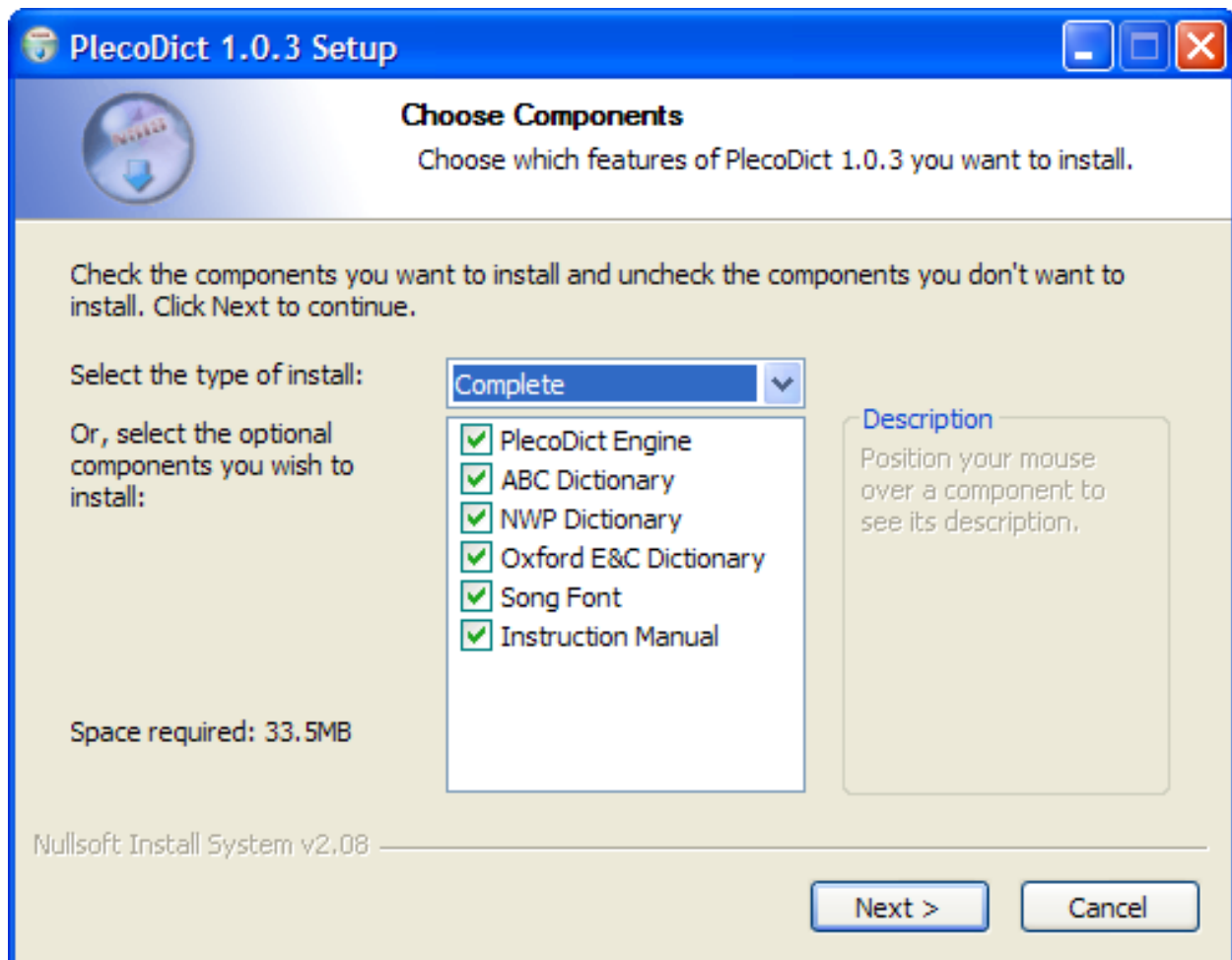
If you've previously purchased PlecoDict and want to reinstall the paid version, continue on page 20.

### *Installing the Demo Version*

1) Visit <http://www.pleco.com/ppcdownload.html> to download the demo version of PlecoDict. You can choose from two different download options:

- **Complete/Professional:** includes all available dictionaries
- **Basic:** includes only the Oxford Concise dictionaries (but downloads faster)

2) You should now have a file called "pccomplete103.exe" or "pcbasic103.exe" on your desktop. Double-click on it to bring up this installation screen:

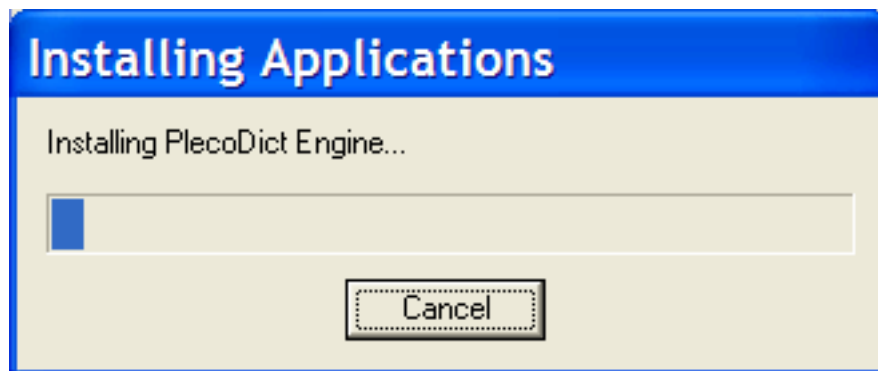


Select the version of PlecoDict you're interested in purchasing from the menu at the top of the screen, or check the boxes for the specific features you wish to install. Here's what each of those features does:

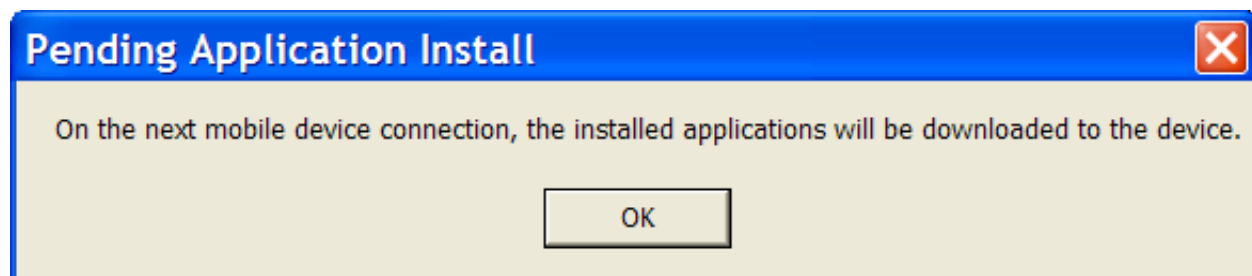
- **PlecoDict Engine:** The main program, data files, and handwriting recognizer for PlecoDict. Always install this.
- **ABC Dictionary:** The ABC Chinese-English Comprehensive Dictionary. Install this for PlecoDict Professional or Complete.
- **NWP Dictionary:** The NWP English-Chinese Pinyin Dictionary. Install this for PlecoDict Professional or Complete.
- **Oxford E&C Dictionary:** The Oxford Concise English-Chinese and Chinese-English Dictionaries. Install this for PlecoDict Basic or Complete.
- **Song Font:** Chinese font file for PlecoDict. Always install this, unless your Pocket PC already has a Chinese font installed.
- **Instruction Manual:** Puts a copy of the PlecoDict instruction manual on your PC's hard drive. You can access it through the Start Menu.

Once you've finished selecting files, press Next. Press Install on the next screen to begin installation.

3) After a few seconds, this screen should come up as the files copy over to your Pocket PC:



Wait for the files to copy over. The file copying process may take several minutes, so be patient. You might see a screen that looks like this come up instead:



In that case, connect your Pocket PC to your computer and the correct screen should appear.



4) You will now see a security warning dialog on your Pocket PC. Press “Yes” to continue. Unfortunately, it’s not possible for us to get rid of these warnings, because the system for signing code (and eliminating the warnings) won’t work with applications that have data files as large as PlecoDict’s.

5) This prompt should now appear:



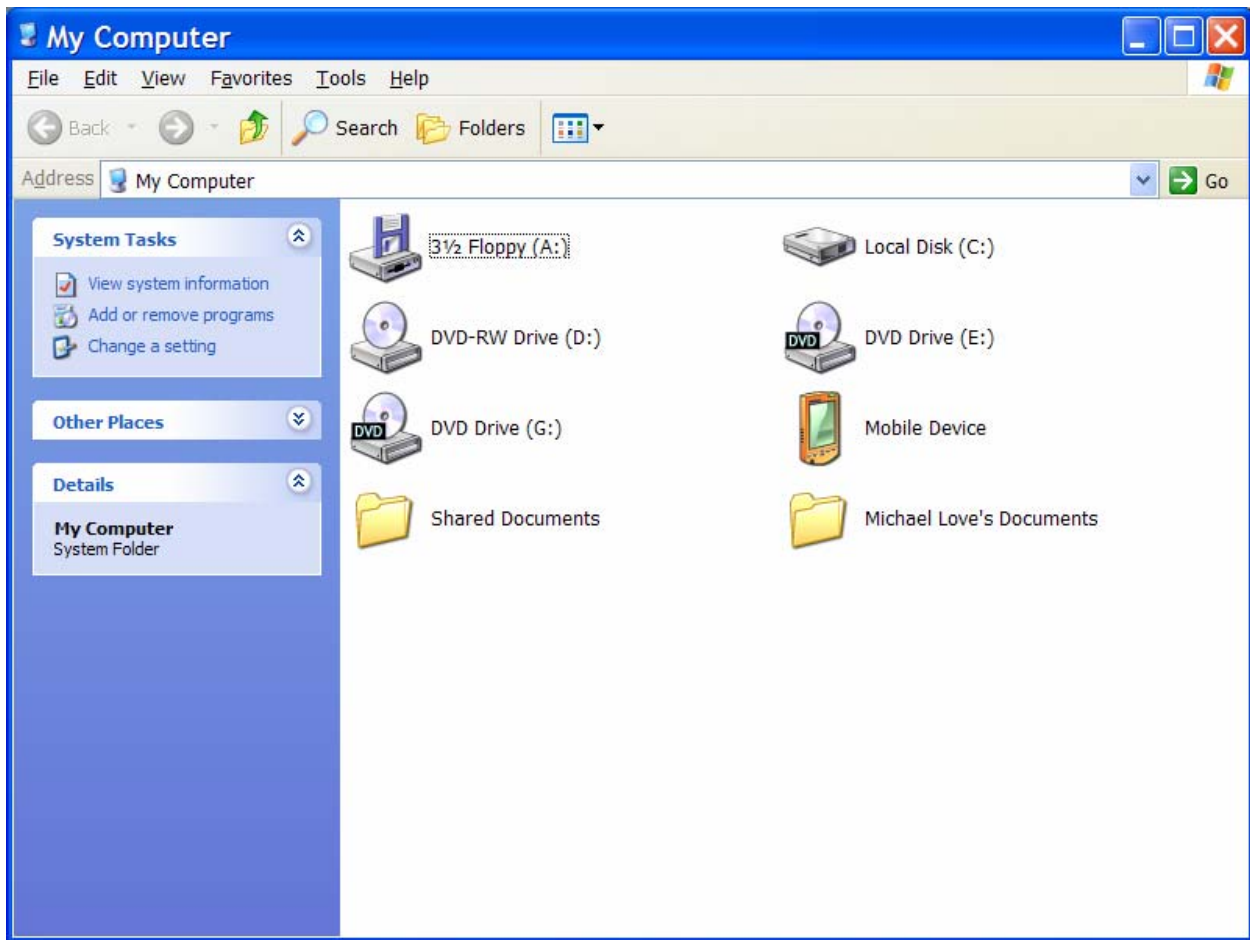
You will want to choose the "Storage Card" directory. It may also be called "CF Card" or "SD Card" or "Memory Card" or something similar, depending on your Pocket PC's manufacturer. If no card is available, you can also select "Device" to install PlecoDict to your Pocket PC's internal memory; however, there may not be sufficient free space to install PlecoDict there, so we strongly recommend using a memory card for installation. After choosing a directory, press Install to proceed with installation.

6) After a little while, another security warning should appear. Select Yes, and the “Choose a location” screen should appear again with a different installation file. Choose the same directory as before, and press Install again to continue. Repeat this until the installation completes.

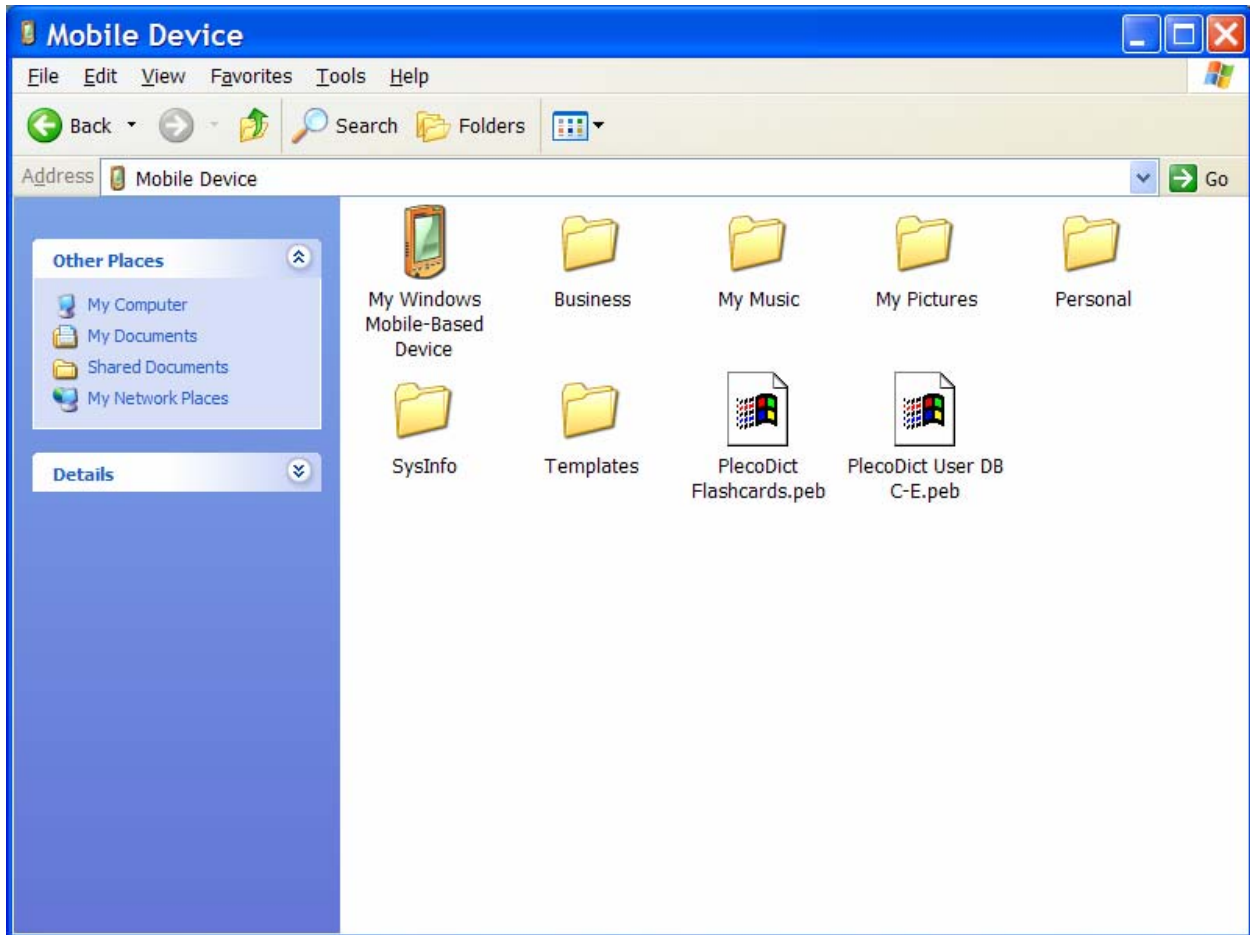
7) Finally, go to the Start menu and "Programs" and there should be an icon for PlecoDict. Tap on that icon to launch the software. There’ll be one or two more security warning dialogs the first time you run PlecoDict; press “Yes” for each. They shouldn’t appear again unless you upgrade or reinstall PlecoDict.

*Upgrading from the Demo to the Paid Version*

1) Install your PlecoDict keyfile. It should be attached to your order confirmation e-mail; you can also download it from My Orders (<http://www.pleco.com/orders.html>). After you've downloaded the file, connect your Pocket PC to your desktop computer and open up My Computer:



Double-click on the "Mobile Device" icon to bring up this screen:



Drag the keyfile into this window (which is actually your Pocket PC's "My Documents" folder) to copy it to your Pocket PC.

8) You're done! Go into "Programs" in the Start Menu and click on the PlecoDict icon to open PlecoDict. A message will appear thanking you for your purchase, and you should now have access to all of PlecoDict's capabilities.

### *Reinstalling the Paid Version of PlecoDict*

The data files for the demo and paid versions of PlecoDict are identical, so just follow the steps under “Installing the Demo Version” (page 8) and then the steps under “Upgrading from the Demo to the Paid Version” (page 12) to reinstall the paid-version software.

## Manual Installation

If the other installation methods don't work, you're using Mac OS or Linux, or you're an advanced user and want to control exactly where PlecoDict installs its data files, follow these steps to install PlecoDict.

1) Download the "manual install" version of PlecoDict (demo or full). The manual install works on both Windows Mobile 2003 and Windows Mobile 5.

2) The file you downloaded is called a 'Zip' file. Zip files are a way of packaging multiple data files into a single download. To get the data files out of the Zip file, you must 'Extract' those files to a folder; installing the Zip file directly to your Palm will not work.

If you're running Windows XP, simply double-click on the downloaded file and it should automatically extract to a folder. If you're running an earlier version of Windows, double-clicking on the file should work as well. If it doesn't, go to <http://www.winzip.com/> and download and install the demo version of their WinZip utility program; once that's installed, double-clicking on the file should work. If you're running Mac OS or Linux, your system should have a Zip file extractor built in, so simply double-click on the file to extract it to a folder.

You'll now have a folder full of data files. Open it (if it hasn't already been opened for you), and you should see a couple of files and folders inside; these are PlecoDict's data files.

3) On Windows, open up "My Computer" on your desktop and double-click on the "Mobile Device" icon to access your Pocket PC's filesystem. Double-click on "My Windows Mobile-Based Device" to get the main directory of your Pocket PC. From there, double-click on your storage card ("Storage Card", "CF Card" or "SD Card" on most Pocket PCs) and create a folder inside of there called "PlecoDict".

If you're running Mac OS or Linux, see your Pocket PC sync software's instructions for information on how to mount your Pocket PC's internal memory as a drive on your desktop computer.

4) Go back to the folder full of PlecoDict's data files. Choose from the following files (and NOT any other files) to copy over to the newly-created PlecoDict folder:

- **PlecoDict.exe:** Always install this file.
- **Radicals.pdb:** Install this if you want to use PlecoDict's radical input feature.
- **Dictionaries\Oxford C-E.pdb:** Install this file if you want to use the Oxford Concise Chinese-to-English Dictionary in PlecoDict.
- **Dictionaries\Oxford E-C.pdb:** Install this file if you want to use the Oxford Concise English-to-Chinese Dictionary in PlecoDict.
- **Dictionaries\ABC.pdb:** Install this file if you want to use the ABC Chinese-English Comprehensive Dictionary in PlecoDict.

- **Dictionaries\NWP.pdb:** Install this file if you want to use the NWP English-Chinese Pinyin Dictionary in PlecoDict.
- **Text Converters\CharConvert.pdb:** Install this if you want to display dictionary definitions in PlecoDict with Traditional Chinese characters. You can also install it if you normally want to display Simplified Chinese characters but might occasionally want to switch to Traditional.
- **Text Converters\B5.pdb:** Install this file if you want PlecoDict to be able to import/export text files encoded with the Big5 text encoding system. If you don't know what that means, ignore this file.
- **Text Converters\GB.pdb:** Install this file if you want PlecoDict to be able to import/export text files encoded with the GB-2312 text encoding system. If you don't know what that means, ignore this file.

5) After copying over those files, go back to the main directory of your Pocket PC ("My Windows Mobile-Based Device") and open up the "Program Files" folder. Create a folder inside of that called "PlecoDict".

6) Go back again to the folder full of PlecoDict's data files. Choose from the following files to copy over to the PlecoDict folder in Program Files:

- **PlecoHWR.dll:** Install this file to enable handwriting recognition in PlecoDict.
- **Fonts\PlecoPinyin.ttf:** Always install this file (it's required to display Pinyin).
- **Fonts\PlecoPinyinBold.ttf:** Always install this file (it's required to display Pinyin).
- **Fonts\SimSun.ttc:** Always install this font file, unless your Pocket PC already has Chinese support built in.

**NOTE:** If your Pocket PC is extremely low on internal memory, it's also possible to install all of these files to an SD/CF card instead of to your Pocket PC's main memory. We strongly discourage this, however, since due to a bug in the Windows CE operating system, library and font files installed on an external storage card can be very unstable (causing PlecoDict to crash or generally act up whenever you turn your Pocket PC off and on while PlecoDict is running).

7) If you're installing the full (paid) version of PlecoDict, copy your keyfile to this directory as well. (if you've lost it, you can re-download it from <http://www.pleco.com/orders.html>)

8) After you're finished copying files, open up "File Explorer" on your Pocket PC (it should be in the Programs section of Start Menu). In File Explorer, tap on the menu just below the start menu (and above the list of files) and select "My Device". Tap on "Storage Card" (or "SD Card" or "CF Card") and open up the PlecoDict folder inside of that. Tap and hold your stylus on the file "PlecoDict.exe" in that folder, and select "Copy".

9) Go back to "My Device" and open up the Windows folder, the Start Menu folder inside of that, and the Programs folder inside of that. Choose "Paste Shortcut" from the "Edit" menu to put a link to PlecoDict in your Pocket PC's "Programs" screen.

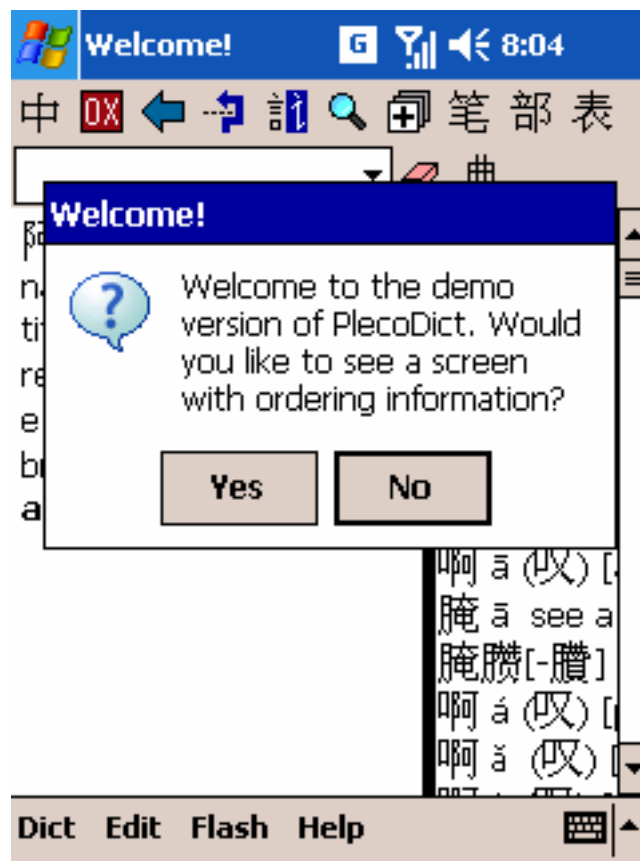
9) You're done! Go to Start Menu, Programs, and tap on the PlecoDict icon to launch the software. If you're running Windows Mobile 5, there'll be one or two security warning dialogs the first time you run PlecoDict; press "Yes" for each. They shouldn't appear again unless you upgrade or reinstall PlecoDict.

# Tutorial

## Starting the program

After installation, there should be an icon for PlecoDict in your Pocket PC's "Programs" folder. To get to the Programs folder, simply go to the Start menu and select "Programs." If you don't see a PlecoDict icon there, scroll down to make sure you check all of the icons.

When the demo version starts up, you'll see this message:



Click "Yes" for instructions on how to purchase / unlock this software, including the Device ID you'll need to place your order. (see the "Ordering" section of the manual for details)

## Your first search

You're now in the main screen of PlecoDict. You can input searches in the Input Field:





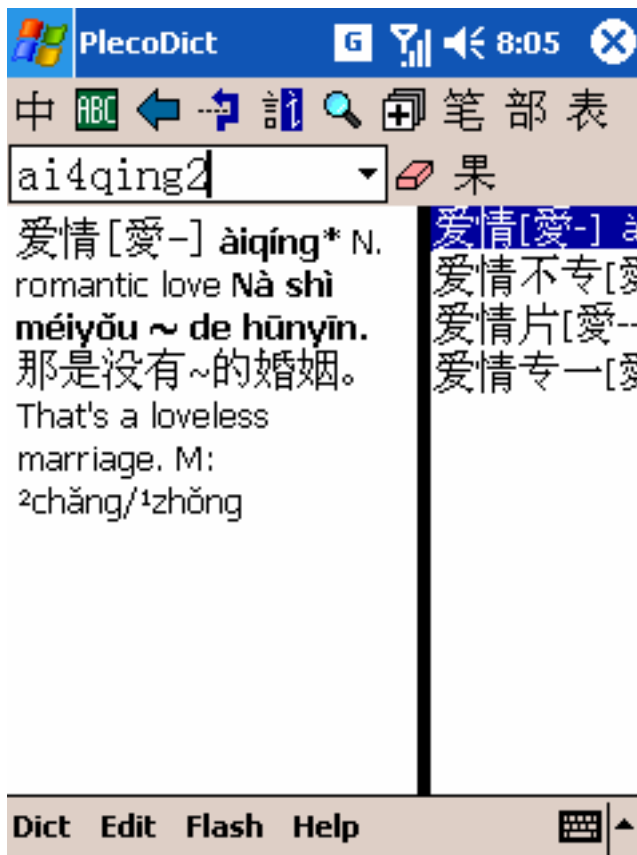
Let's try a Pinyin search. If your handheld has a keyboard, just type in your search on the keyboard. Otherwise, tap on the onscreen keyboard button (located at the bottom right corner of your handheld's screen) to bring up a keyboard at the bottom of the screen.

When entering Pinyin, type a number after each syllable to indicate tones:

1	Flat tone	mā
2	Rising tone	má
3	Falling-rising tone	mǎ
4	Falling tone	mà
5	Neutral tone	ma

So 你好 could be input as 'ni3hao3'. You can also enter a Pinyin search without tones – use apostrophes for ambiguous syllables, like “xian” versus “xi'an.”

Let's try the query 爱情 “ai4qing2” – enter the Pinyin into the Input Field using one of the methods described above. When you finish typing or writing, the screen should look like this:

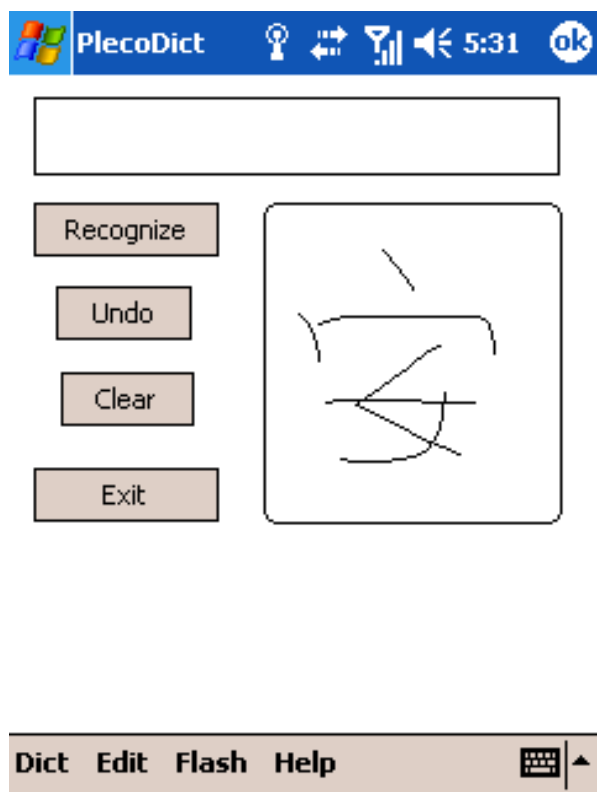


You'll see the entry for 爱情 in the definition area. Tap on the list button (表) at the upper right corner of the screen to bring up a list of similar entries; you can tap on the list to jump to a different entry. You can also scroll through the list using the arrows at the bottom-left and bottom-right corners of the list.

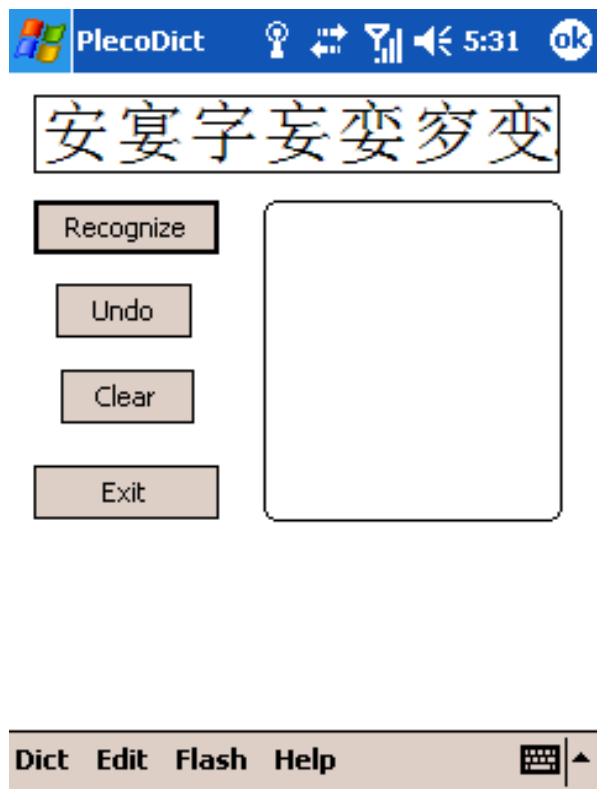
Now, tap on the eraser at the right of the Input Field to clear its contents before proceeding to the next section.

## Handwriting input

Now we'll try to enter a Chinese character using handwriting recognition. Tap on the handwriting recognizer button (handwriting icon) – the third icon from the right at the top of the screen – to bring up the handwriting recognizer screen:



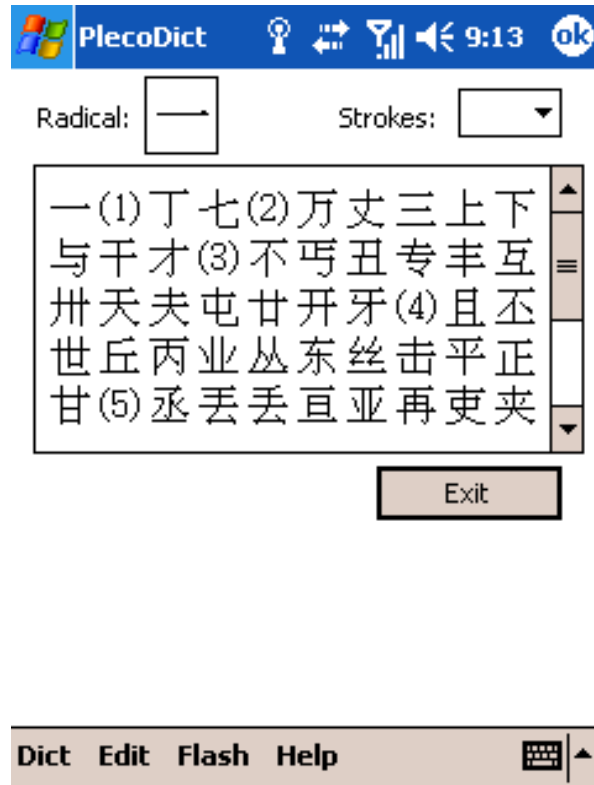
Draw the character 安, trying to use correct stroke order (see the numbers in the diagram). For more details on stroke order, see the “handwriting input” section of the manual. Once you finish drawing, press the “Recognize” button; PlecoDict will analyze your strokes and display a list of matching characters at the top of the screen:



Tap on the correct character to enter it into the dictionary. If none of the characters is correct, try drawing the character again, varying the stroke order slightly if possible. If you can't see a character clearly, hold your stylus on it briefly to bring up a magnified version at the top right corner of the screen; if it's not the correct character, drag the stylus off of it to cancel.

## Radical Input

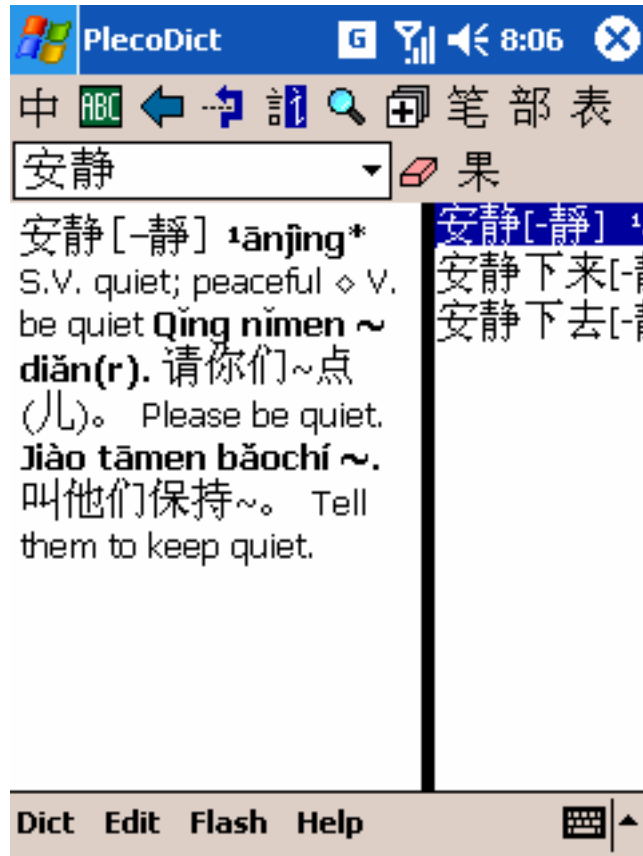
You can also enter characters using a radical index (similar to those in printed Chinese dictionaries). Tap on the radical input button – the second from the right at the top of the screen – to bring up the radical input screen:



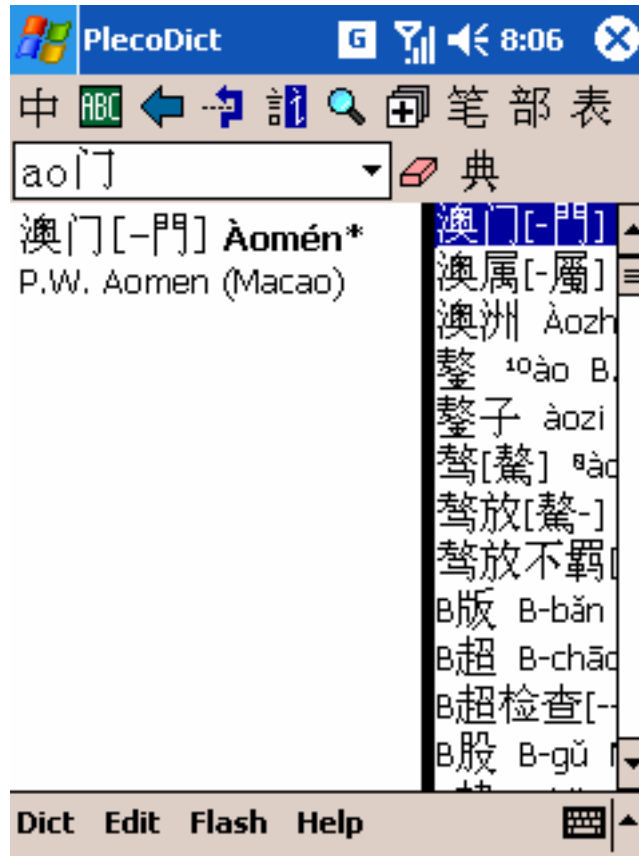
Tap on the “Radical” box at the top of the screen to choose a radical. Then, tap on the “Strokes” pop-up menu at the upper right corner of the screen and select 3 to jump to radicals containing 3 strokes. Tap on the radical 一 to select it. Then, locate the character 安 on the first row and tap on it to enter it into the dictionary.

## More searches

Let’s try a multiple-character search. Using one of the two methods above, enter the characters 安静 – you should get the following result screen:



Clear the Input Field again (with the eraser button), then enter the Pinyin syllable “ao” in the Input Field. After that, use radical or handwriting input to enter the character 阝. You should now have the search string “ao 阝” – notice that even with mixed Pinyin and characters, the results will come up correctly:



This is an important feature – you can use it to more quickly search for a word where you already recognize one character. It works with either Pinyin first and characters second or with characters first and Pinyin second.

You may notice that the indicator above the list has changed; after the previous searches, it was probably 果 ‘guǒ’, but after this search it’s 典 ‘diǎn’. This indicator is actually a button, which toggles the entry list between two different modes: 果 lists the results of a search, 典 lists the entire dictionary in Pinyin-character order. When multiple search results are listed, tapping on the button will jump to the current result’s position in the entire dictionary.

Clear the Input Field again and try another Pinyin input: “ai4”. You’ll notice a list of 7 or 8 characters which match that Pinyin; if the list is not visible, tap on the 表 button at the top right corner of the screen. Select 爱, then press the Copy to Input Field button - this is the third button from the left at the top of the screen. You’ll now see the character 爱 in the Input Field. Now, type the Pinyin syllable “qing2”. This is a great way to hone down the number of results from a Pinyin Search.

You can also use the Copy to Input Field button to look up a word in a dictionary definition; just highlight the word and tap the button to copy it to the Input Field. To go back to the previous search query, tap on the downward-pointing triangle to the right of the Input Field and choose that previous query – another handy feature.

Now we'll try an English search. Tap on the leftmost button at the top of the screen – 中: this button toggles between the Chinese-English and English-Chinese dictionaries. Now try typing the English word “antelope”. This will bring up the following results:



You can click on entries in the list at right just like with a Chinese-to-English search.

This completes our tour of the basic features of PlecoDict. For more information on searching, see the Reference section of this manual.

## Flashcards

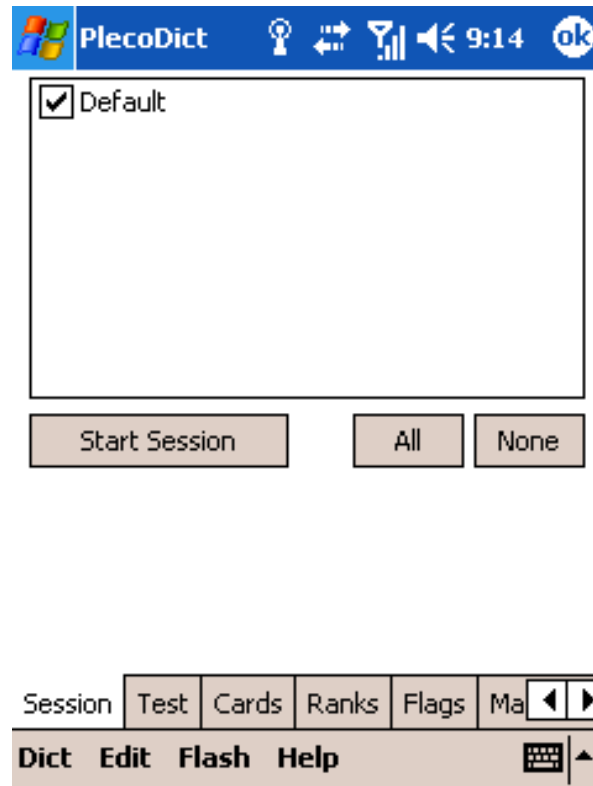
PlecoDict incorporates a very powerful system for creating and reviewing study flashcards to help improve your Chinese vocabulary. You can create flashcards based on dictionary entries or input your own, and can use our flexible and powerful system to optimize your flashcard review sessions to focus on the cards that you need the most help with.

This tutorial will walk you through the basic process of creating and reviewing flashcards based on dictionary entries; for more detailed information on flashcards, see the Flashcards chapter in the Reference section.

To start, look up the word 艾 (‘ai4’) in the dictionary using one of the methods you’ve learned before. Then, tap on the Add to Flashcards button (+) – the fourth from the right at the top of the screen. This will add the currently-displayed entry to the default flashcard list.

Now, repeat this procedure for two more words: 肮脏 (‘ang1zang1’) and 傲气 (‘ao4qi4’).

Next, we’ll review these new words in a flashcard session. To begin a new flashcard session, tap on the “Flash” menu at the bottom of the screen, and select “New Flashcard Session” to bring up this screen:

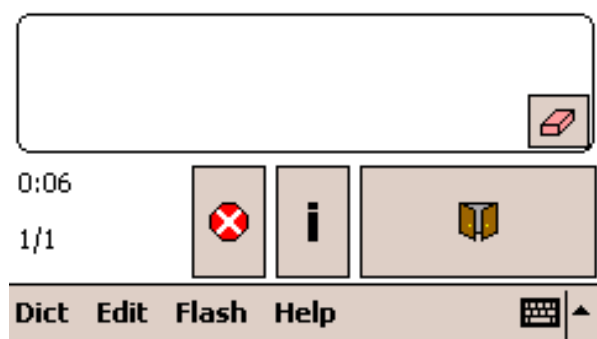


Ignore the various other tabs for now, and tap on the Start Session button to begin your flashcard review session.





艾



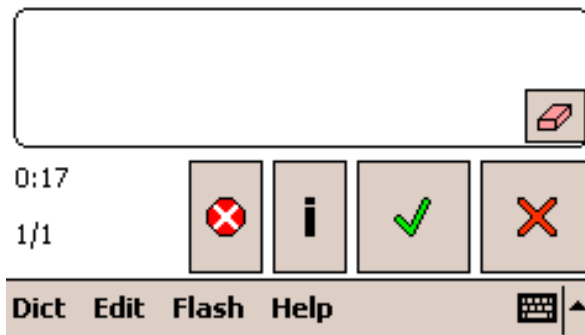
At the top of the screen you'll see the characters for the first word you're reviewing. Below those is an empty space – this is where the definition of the word will appear once you 'reveal' or 'flip' the flashcard.

Below the empty space is the drawing area – you can use this to sketch out your guess about the flashcard before you reveal it. (tap the eraser at its bottom-right corner to clear)

At the bottom of the screen, you'll see a timer indicating the elapsed time since the start of the flashcard session, along with a count '1/3' listing the current flashcard and the total number of cards in the session. Next to these is a red stop sign meaning 'Exit' (which you can use to cancel a flashcard session before it's completed), a question mark (which you can ignore for now), and a big button with a pair of doors on it. This last button is the Reveal button – tap on it to reveal the entire flashcard:

艾

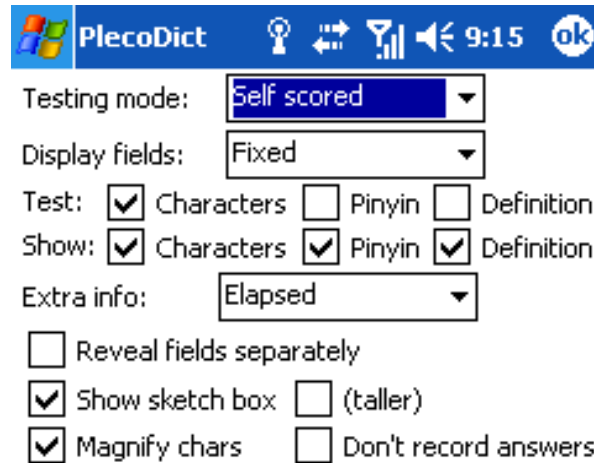
4ài N. ① Ch. mugwort ② Surname  
◇ V. end; stop See also 16yì



You can then tap on the green check-mark or red X to indicate whether your guess as to the flashcard's meaning was correct or incorrect. PlecoDict will record this answer, and use it to adjust the frequency with which this card will appear later on.

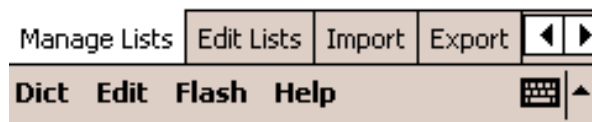
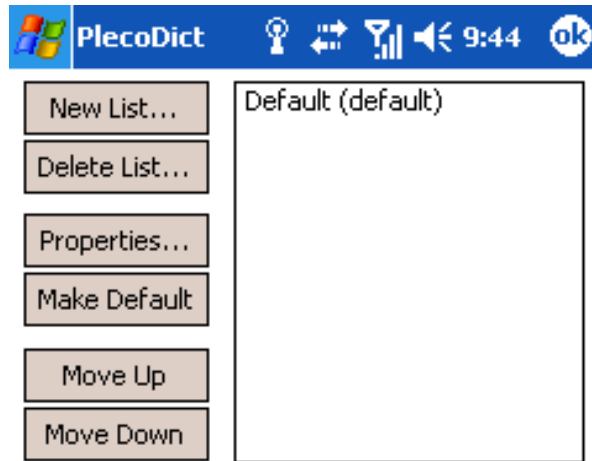
After you've run through all 3 cards, the session will exit.

Now let's start another new session; go to the New Flashcard Session screen again, and this time, tap on "Test" tab to bring up this screen:

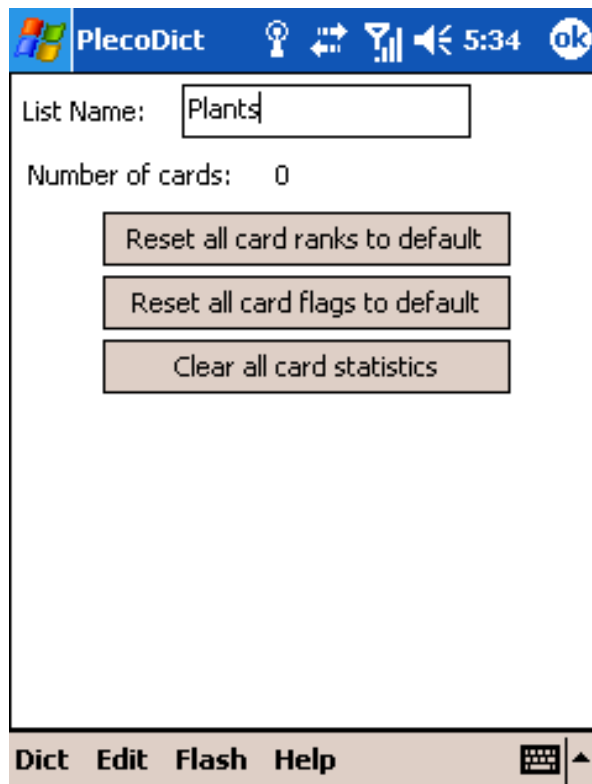


The main thing we're interested in for now are the two rows of checkboxes next to 'Test' and 'Show' – these determine which portion of a flashcard will be revealed before and after you press the Reveal button. Change this setting, and start another flashcard session to see the change.

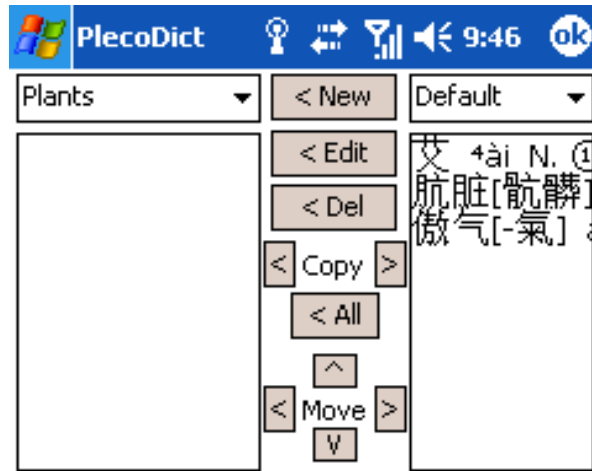
Finally, let's move try organizing our flashcards into multiple lists. Go to the Flash menu again and select Manage Flashcards to bring up this screen:



艾 ('ai4') means "mugwort", so let's create a new flashcard list for "plants" and move this card to that new list. Tap on the "New List" button to bring up this screen:



Enter “Plants” as the name for this list, and tap the “Done” button. Highlight the new Plants list, and tap the “Edit List” button to bring up this screen:



This screen allows you to add and delete cards from flashcard lists and to move and copy cards between lists. Notice the pop-up lists at the top of the screen with the names of the two flashcard lists; you can use these to select the flashcard lists to edit or copy from.

To move 艾 from the right list to the left list, tap on the left-pointing arrow under ‘Move’. ‘Copy’ works the same way but keeps the card in its original list as well. Tap the OK button at the upper right corner of the screen to exit Manage Flashcards.

Check out the Flashcard chapter of the Reference section for information on the many other features of PlecoDict’s flashcard system, such as automatically adjusting the frequency with which flashcards appear based on your performance with them.

That’s the end of this tutorial; you should now be familiar with the basic operation of PlecoDict. If you need help at any time while using PlecoDict, go to the “Help” screen, accessible through the Help menu in PlecoDict’s menu bar, or tap on the ‘i’ that appears at the top right corner of every dialog box for detailed instructions on how to use that dialog. And if you encounter any problems or are confused by any of these instructions, send us an e-mail at [support@pleco.com](mailto:support@pleco.com) and we’ll be happy to assist you.

# Reference

## Main Interface

When you first open PlecoDict, you'll be confronted with this screen:



At the top of the screen is the **Toolbar**; this is your main interface to most of PlecoDict's functions. The functions of all these buttons are described in the "Toolbar and Menu Commands" section below.

Below the toolbar is the **Input Field** - this is where you actually enter a word to look up in the dictionary. The use of the Input Field is covered in detail in the "Searching" section. Next to the Input Field is the **Recent Query List** - tap on that downward-pointing triangle to bring up a list of the words you've looked up recently. And to the right of that list trigger is the **Clear Button**, which clears the contents of the Input Field. You can optionally add a **Search Button** here as well; see the Preferences section for more on that.

At the far right of the second row of controls is the **List Mode Button** - the use of this is described later on in the "Entry List" section. When the entry list is hidden, this button will be replaced by a pair of **Up/Down Arrows** which allow you to scroll through the dictionary without using the Entry List.

The rest of the screen is taken up by the dictionary definition text and the **Entry List**. Clicking and dragging on the black bar next to the Entry List will allow you to resize it. If the Entry List is not visible, tap on the appropriate toolbar button or choose "Toggle Entry List" from the Dict menu to open it.

## Searching

You can look up Chinese words in PlecoDict using characters, Pinyin, or a combination of the two, with the option of using wildcards in place of one or more characters. Any character you enter in the Main Screen will automatically be inserted into the Input Field; by default, the dictionary will search for the entered character or characters immediately, but you can configure a delay timer in Preferences if you prefer to only search when you've finished entering a word.

If a search results in only a single matching entry, the software will simply jump to the correct location in the dictionary instead of bringing up a result list. Single-character searches will, by default, return only the single-character entries which match the search query, though this can be disabled in Preferences.

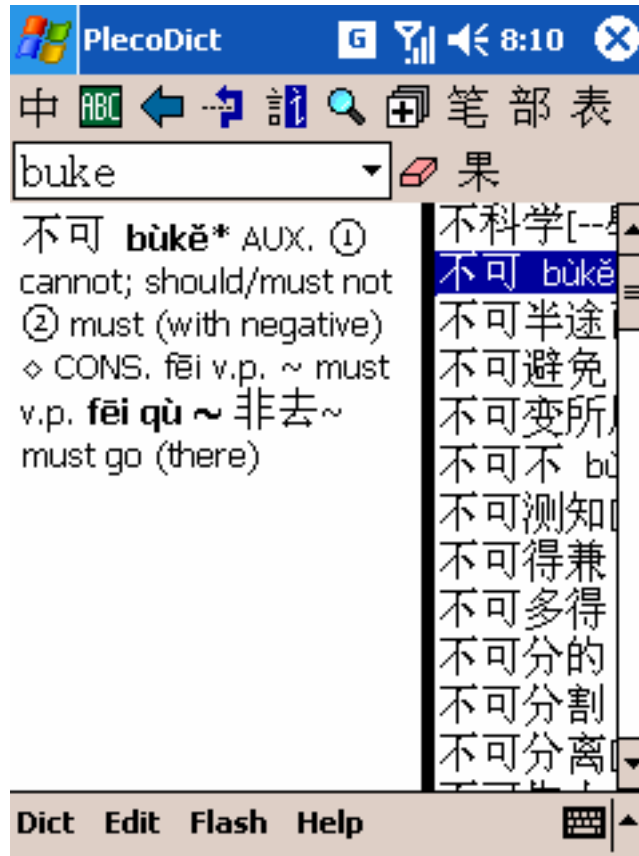
If you find searching after every character input to be too slow, enable the "Delay before search" option in Preferences - with that option enabled, the dictionary will only begin a search after a certain amount of time has elapsed since you last entered a character. If you find deleting characters to be very slow, enable the "Don't auto-search on backspace" option.

You can also disable automatic searching altogether by enabling the Search button with the 'Require' setting; normally, the Search button simply overrides any search delay, but with Require enabled the dictionary will only search for a word after you tap on the Search button.

### *Pinyin Search*

To search for a Pinyin word, you enter the letters in each syllable just like you would in a standard Chinese OS; you can indicate tones with numbers at the end of words, like "ci2dian3", or you can enter words without tones, like "cidian". Separate confusing syllables with spaces or apostrophes, like xi'an or xi an (this lets us distinguish xi'an from the single syllable xian).

When you enter a multi-syllable pinyin word, the dictionary will give you a list of every possible match; for example,



Here the user has entered "buke" and the dictionary has brought up every word with Pinyin beginning with those 4 characters - 'buke', 'buken', etc. If you enable the "Only search for exact PY match" option in Preferences, the dictionary will search only for the exact Pinyin syllables entered (though it will continue to search for all possible tones when a specific tone isn't given) - this is significantly faster but yields fewer results. You can also "cut off" the last syllable of a word by inserting a space – using the above example, entering "buke " would give you only the "buke" results.

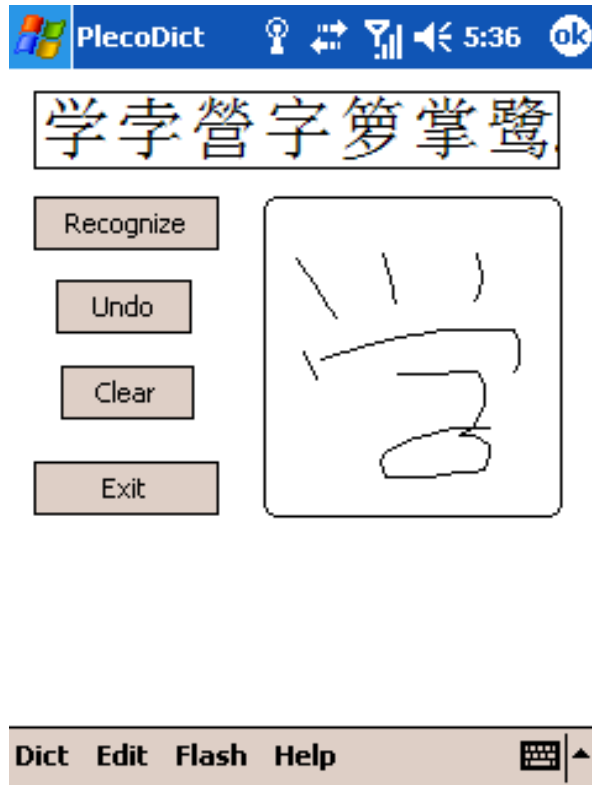
### *Character Search*

PlecoDict accepts character input in two forms: radical selection and handwriting input. You can also use an external Chinese OS like CE-Star or Monster Chinese, or if you've installed another handwriting recognizer which you prefer to use in place of our system, you can use that as well.

### *Handwriting Input*

Selecting the Handwriting Input menu item or toolbar button will normally bring up this screen:





To input a handwritten Chinese character, simply draw it in the large box at the lower-right corner of the screen. You can separate your strokes or write in cursive. Using correct stroke order greatly increases the odds of the recognizer understanding your handwriting; if you're uncertain as to how stroke order works, here are the four basic rules, in descending order of priority:

1. Draw characters from top to bottom.
2. Draw characters from left to right. This usually comes after top-to-bottom in priority, so that in a character like 请, you would draw the left part from top to bottom and then the right part from top to bottom.
3. Draw horizontal strokes before vertical strokes, except that usually in a character with many horizontal strokes intersected by one vertical stroke (like the top right corner of the above character) you draw all but the bottom horizontal stroke, then the vertical stroke, and then finish off with that last horizontal stroke.
4. Draw from the outside to the inside, except that in characters like 小, where you don't really have one form enclosing another, you draw the center stroke before the outside ones (inside to outside).

You can find more complete information on stroke order at <http://www.zhongwen.com/shufa/> (among many other places) and there's a site with stroke order demonstrations for many characters at [http://www.usc.edu/dept/ealc/chinese/newweb/character\\_page.html](http://www.usc.edu/dept/ealc/chinese/newweb/character_page.html).

Once you've drawn your character, click the **Recognize** button. Up to 8 potential matches will appear in the top half of the screen. You can tap on one to enter it into the dictionary's input field, press Cancel to abort your search, or draw the character again and press Recognize to make

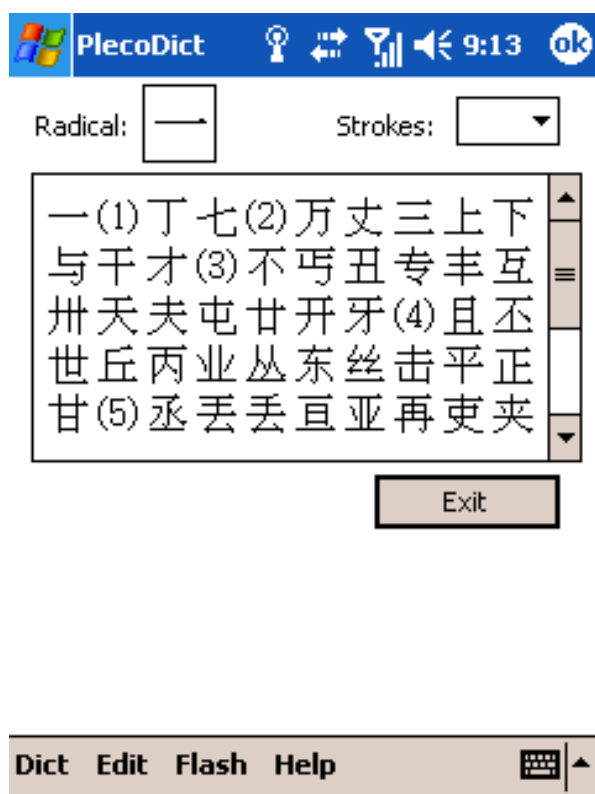
another attempt at recognizing it. Tap on a character and then drag your stylus off of it (without lifting it up) to bring up a magnified version of the character.

Below the Recognize button you'll see the **Undo** button; tap this button to erase the most recently drawn stroke without erasing the entire character. This will work all the way back to the very first stroke drawn.

Below Undo is the **Clear** button – tap on that to erase the entire character drawn. Finally, the **Exit** button allows you to exit the handwriting input screen without inputting a character.

### *Radical Input*

Selecting the Radical Input menu item or toolbar button brings up this screen:



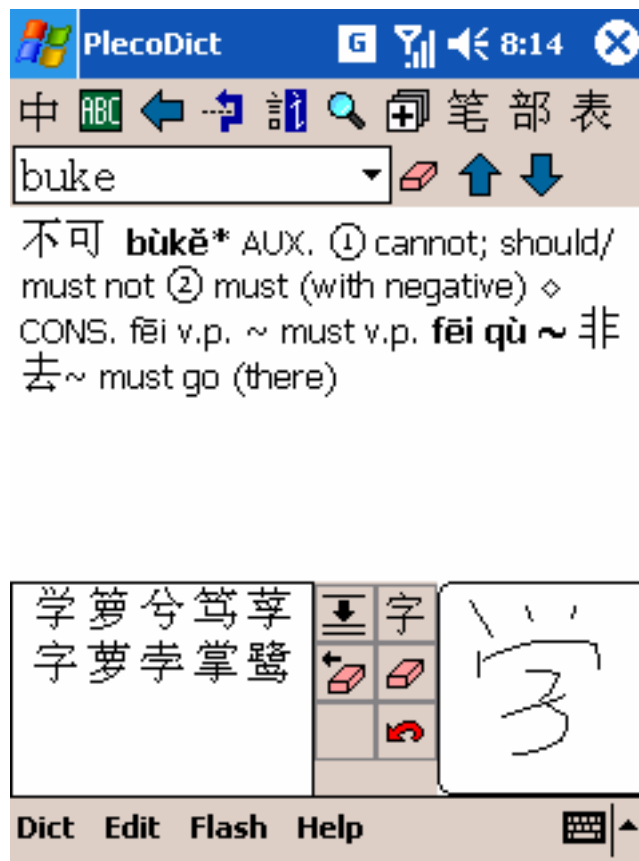
On the top of the screen next to the "Radical:" text is the **Current Radical** - tap on this to select a new radical. Next to this, the **Strokes** setting allows you to jump to characters containing a given number of (non-radical) strokes. The circled numbers in the character grid indicate the beginning of characters with that particular number of strokes. You can scroll through the radical table using the scrollbar at the right of the screen, or tap on a radical to insert it into PlecoDict's input field; if you're in radical selection mode, tapping on a radical in the grid will make it the current radical.

If you highlight a character in the dictionary before going to Radical Input, the Radical Input screen will jump to the radical associated with that character. This can be very useful if you're

having difficulty entering a particular character with handwriting recognition; simply find a similar character (either from the list of handwriting alternates or from a dictionary search), highlight it, and bring up the radical screen and the character you're looking for should hopefully be in view.

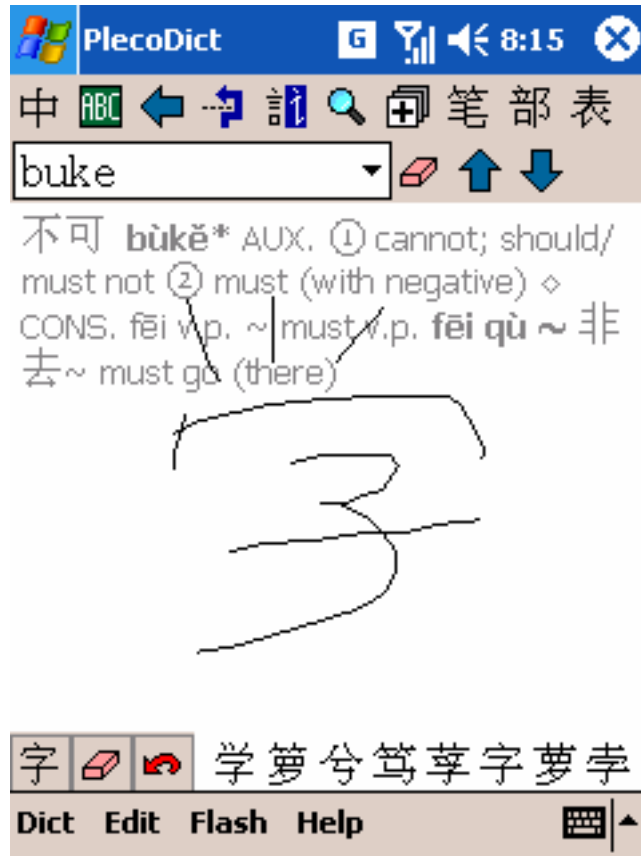
### Alternate Radical/Handwriting Input

If you prefer not to have to go to a separate screen to enter characters with handwriting recognition, you can also enter them from within the main screen of the dictionary. To do this, simply tap and hold on the radical or handwriting recognition button and select "Left", "Right", or "Bottom" depending on where on the screen you want the input palette to appear. For example, selecting "bottom" with the handwriting recognition palette will make the screen look like this:



This works pretty much like the separate handwriting input screen - you enter characters in the large box and the matches display to the right. The character set button is identical to its

fullscreen equivalent; 字 is Recognize, ↶ is undo, and ☐ is Clear. There are also two new buttons: ↶☐ deletes the character you just entered from the Input Field, and ≡ shrinks the handwriting recognition palette to a smaller version:



In this smaller version of the handwriting recognizer, the entire definition field becomes the drawing area. The "On"/"Off" button allows you to quickly enable or disable stroke capture; enabling the "Disable palette HWR after input" option in Preferences will automatically turn stroke capture off after you input a character. There's normally no backspace button available in this mode, but you can add one through the Preferences screen.

The shrunken radical palette works similarly:



characters in place of the \$ symbol - \$谢 would be equivalent to searching for 谢, @谢, @@谢, @@@谢, and @@@@谢 all at the same time. This is a great way to look up all of the words which contain a particular character. You can combine the \$ with the @ symbol, so if you wanted to look for all words where 谢 was the second character or later, you could do this using the query @\$谢 (or \$@谢).

### Mixed Search

PlecoDict's most powerful search feature of all is the ability to search for a mix of characters and Pinyin. To use this, simply enter a character followed by a Pinyin syllable, or vice versa. For example, you could look up 你好 "ni3hao3" by entering "你 hao3" or "ni3 好". This works just as quickly as a character-only or Pinyin-only search, and can save a lot of time if you're looking up a word where you recognize (and know the Pinyin for) one character but aren't sure about another.

This type of search will only work in the first two character positions of a word - i.e., you can enter a character followed by one or more Pinyin syllables, or a Pinyin syllable followed by one or more characters, but you cannot enter a character, a Pinyin syllable, and another character.


## Toolbar and Menu Commands






PlecoDict's toolbar is a mirror of its menu bar; nearly every command on the toolbar is also accessible through the menus, and vice versa. You can customize which buttons appear on the toolbar and in what order using the "Toolbar" section of PlecoDict's Preferences panel.

To access the menu bar on most Palm OS handhelds, tap on the Menu button at the lower left corner of the silk screened Graffiti area, which is located right below your handheld's display. On some models this may be replaced by a keyboard button, or a button on the icon bar at the bottom of the screen.




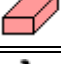

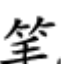




With some toolbar buttons, you can tap-and-hold the stylus to bring up extra commands or options; those extra commands are discussed below.

### Dict Menu




中英	<b>Switch Languages</b>	Switch between the English to Chinese and Chinese to English sets of dictionaries. The first icon tells you you're in Chinese-English mode, the second English-Chinese.
	<b>Switch Dictionaries</b>	Cycle through individual dictionaries for a given language. The icon changes to reflect the current dictionary. Tap and hold on this button to choose a dictionary without cycling.
表	<b>Toggle Entry List</b>	Opens and closes the Entry List. Tap and hold on the toolbar button to choose which side of the screen the list should be on.

	<b>Back</b>	Go back to the entry you were previously viewing. This works just like the Back button in a web browser.
	<b>Forward</b>	If you've gone back several entries with the Back button, this moves you forward again to your most recently viewed entry, again just like in a web browser.
	<b>Switch Character Set</b>	Toggles between traditional and simplified characters in the entry text. The left side represents traditional character mode, the right side simplified. This only affects the dictionary definition text; you can search for both simplified and traditional characters without changing this setting.
	<b>Switch List Mode</b>	Changes the Entry List mode, see the Entry List section below for details. (not a toolbar button)
	<b>Preferences...</b>	Bring up the Preferences screen.



### Edit Menu

	<b>Cut</b>	Copies the selected text to the clipboard and deletes it from the source field.
	<b>Copy</b>	Copies the selected text to the clipboard.
	<b>Paste</b>	Inserts the contents of the clipboard into the selected field.
	<b>Clear</b>	Clears the contents of the Input Field.
	<b>Radical Input...</b>	Brings up the Radical Input screen. Tap and hold on this button to bring up radical input inside of the main interface.
	<b>Handwritten Input...</b>	Bring up the Handwriting Input screen. Tap and hold on this button to bring up handwriting input inside of the main interface.
	<b>Copy to Input Field</b>	Copies the currently selected text into the Input Field and looks it up. If no text is selected, copies the current headword to the Input Field.
	<b>Add/Edit Entry</b>	Brings up the Add/Edit entry screen (see Custom Dictionaries below).
	<b>Delete Entry</b>	Deletes the currently selected custom dictionary entry.
	<b>Magnify Selection</b>	Brings up a magnified version of the currently selected text.

### Flashcards Menu

	<b>New Flashcard Session</b>	Starts a new flashcard review session. (see Flashcards below for more)
	<b>Manage Flashcards</b>	Brings up a screen where you can reorganize, add, delete, import and export flashcards.
	<b>Add Current Entry</b>	Adds the currently displayed entry to the default flashcard list. Tapping and holding this button will allow you to select which list to add the entry to.

## Help Menu

	<b>Ordering...</b>	Brings up a screen with your Device ID and information on ordering the paid version of our software.
	<b>About PlecoDict</b>	Brings up the standard program About Box, with copyright and version info.

## Navigation

### *Entry List*

Tap on the "Toggle Entry List" button (or select the corresponding menu command) to show or hide the Entry List. You can also tap and hold on this button to move the list to the left, right, or bottom side of the screen, or to switch it to fullscreen mode.

When the entry list is visible, the List Mode button will appear at the right of the input field: 典 or 果. Tapping on this button will toggle between the list between Result Mode and Dictionary Mode. You can also toggle between modes by pressing the center button on your Palm's 5-way navigator (if it has one). The dictionary will automatically switch to Result Mode whenever you perform a search that produces more than one matching result.

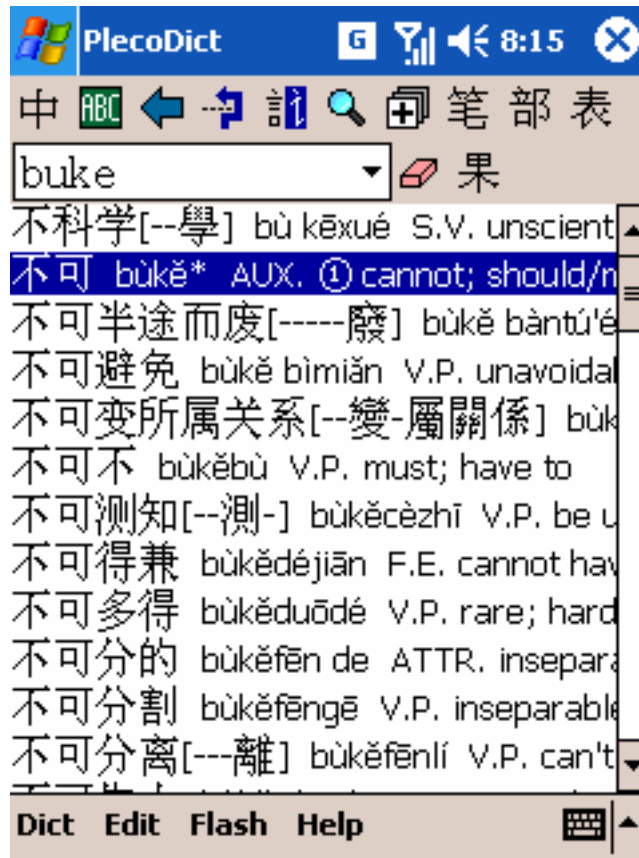
In **Result Mode**, indicated by 果, the entry list displays the results of the current search query. If you've enabled the "1-char results for 1-char search" option in Preferences, a search for one character or Pinyin syllable will only show results with a single character.

In **Dictionary Mode**, indicated by 典, the entry list will display all of the entries in the current dictionary. In Pleco-supplied dictionaries, entries will appear a mixed Pinyin/character order; words are sorted first by their starting Pinyin syllable, then by their starting character, then by their second Pinyin syllable (if any), then by their second character, and so on. In user-created dictionaries, entries will appear in the order you added them to the dictionary. The "Switch to dict order on tap/2-tap" option in Preferences will toggle to this mode automatically whenever you tap (or double-tap) on an entry in the Entry List.



When the Entry List is hidden, two arrows appear where the List Mode button normally would - you can tap on them to scroll backward and forward through the dictionary.

Putting the Entry List into “Fullscreen” mode will hide the definition and show only the entry list, like this:



Enabling the "Open fullscreen list for searches" option in Preferences will open the entry list to this mode whenever you enter a search query. The "Close fullscreen list on tap/2-tap" option will exit fullscreen mode and restore the entry list to its old position whenever you tap (or double-tap) on an entry.

### *Back/Forward*

PlecoDict supports a back/forward functionality very much like that of a web browser; you can cycle back and forward through all of the dictionary entries that you've recently viewed.

By default, the back/forward commands are only accessible through the menu bar, but you can easily add them to the toolbar using the Toolbar panel in Preferences.

### *Recent Query List*

You can access the Recent Query List by tapping on the downward-pointing triangle to the right of the Input Field. Use this list to return to a previous dictionary search query without typing it in again.

### *Copy to Input Field*

The Copy to Input Field command is a handy way to cross-reference text in PlecoDict; simply highlight a word in a dictionary entry and tap the Copy to Input Field toolbar button (or select the corresponding menu command) to copy that text to the Input Field and immediately search for it. If no text is selected, Copy to Input Field will copy the current headword to the Input Field.

## Instant Access

The “Instant Access” feature in the Palm OS version of PlecoDict has been replaced by a simple option in the “Characters” tab of “Preferences”: “Look up highlighted word on startup.” With this option enabled, you can highlight a piece of text anywhere on your Pocket PC and run PlecoDict to look it up in the dictionary. It may be helpful to assign PlecoDict to one of your Pocket PC’s hardware buttons: you can do this with the “Buttons” panel in “Settings” (accessible through your Pocket PC’s Start Menu).

## Flashcards

### Introduction

PlecoDict incorporates a very powerful and highly customizable study flashcard system, designed to help you memorize Chinese words in whatever way works best for you.

Flashcards in PlecoDict are essentially nothing more than pointers to dictionary entries; you can attach a flashcard to an existing dictionary entry using the "Add Current Entry" command, or you can create a brand new dictionary entry and a flashcard to go with it using the "New" command in the Edit List section of Manage Flashcards, but either way there's no separate flashcard data, just a dictionary entry.

Flashcards in PlecoDict are organized in three ways: **Lists**, **Ranks**, and **Flags**.

**Lists** are equivalent to stacks of printed flashcards; a card can belong to one and only one list. You create and organize lists using the "Manage Lists" screen. You can choose whatever grouping system you like for flashcard lists - if you're taking an organized Chinese class, we usually recommend that you organize words by lesson or textbook chapter.

**Flags** are pretty much what the name suggests; you can use them to mark a particular flashcard as having a particular set of attributes. You create and organize flags using the “Manage Flags” screen, accessible through the “New Session” screen. You can create up to 32 different flags (for the entire flashcard system), and assign them to a flashcard in any combination you like.

**Ranks** allow you to organize flashcards based on your proficiency with each card; a flashcard can only have a single rank. You create and organize ranks using the “Manage Ranks” screen, accessible through the “New Session” screen. You can create up to 32 different ranks, but the software defaults to just 6.

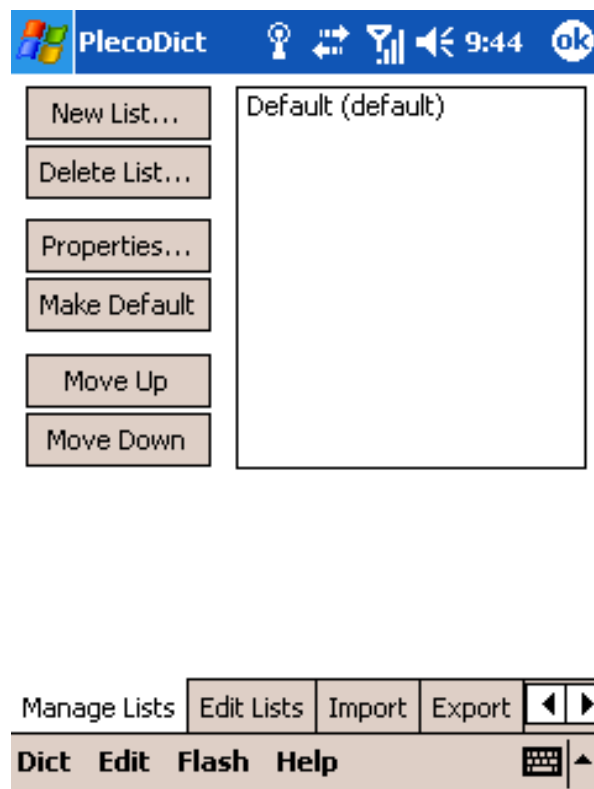
The best way to think about ranks is as a set of boxes. Imagine that you have six boxes, in which you organize a stack of flashcards as follows. Whenever you create a new flashcard, you put it in the first box. Each time you review a flashcard, you move it to a different box depending on whether or not you remembered it correctly; if you did remember it, you move it to the next box, otherwise you keep it in the same box (or move it to the previous box). This allows you to focus your study on the words in the first few boxes (the ones which you have the most difficulty

remembering), while only occasionally reviewing words in the last boxes. Our system allows a lot more customization than that, but the basic idea is the same.

### Creating and Editing Cards

There are two ways to create flashcards in PlecoDict. You can create a flashcard based on an existing dictionary entry using the “Add Current Entry” menu or toolbar command, or you can create a flashcard based on a new, custom dictionary entry using the “New” button in the “Edit Lists” screen.

To edit and organize your flashcards, select "Manage Lists..." from the Flashcards menu to bring up this screen:



This is the main interface for editing and creating lists of flashcards. The left box lists all of the lists currently in memory: the list displayed in bold text is the default list and is where new words will be added with the "Add Current Entry " menu command.

**New List...:** Create a new list.

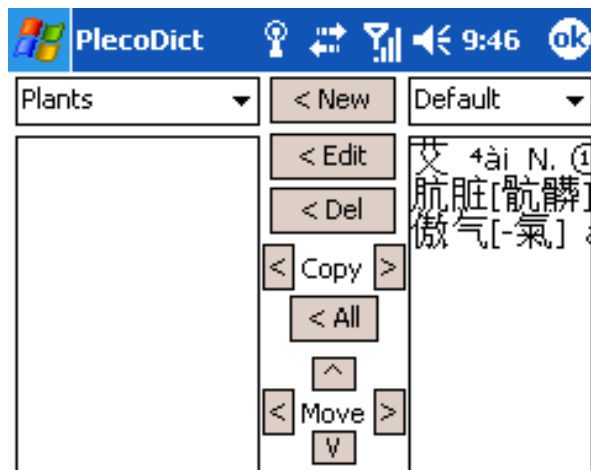
**Delete List...:** Delete the selected list.

**Properties...:** Rename or reset card statistics for the selected list.

**Make Default:** Make the selected flashcard list the default list, to which flashcards will be added when you invoke the “Add Current Entry” command.

**Move Up/Down:** Reorder the flashcard lists by moving the selected list up or down.

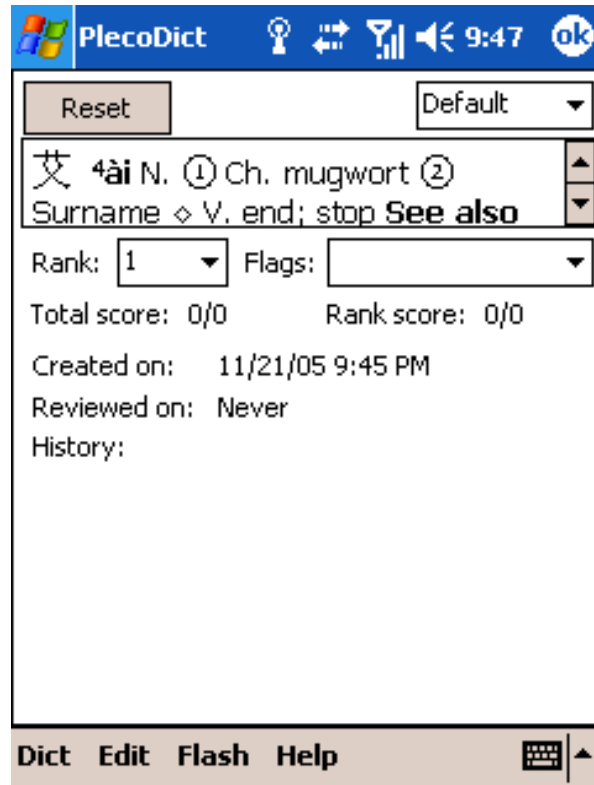
## Edit Lists



You can access the Edit Lists screen by tapping on the “Edit Lists” tab in “Manage Flashcards.”

Tap on the two pop-up menus at the top of the screen to select the flashcard list to add/delete/move cards between. Tap the **New** button to create a new flashcard in the left list based on a new custom dictionary entry. **Edit** brings up the “Edit Flashcards” screen, letting you view detailed statistics about a flashcard, and also edit its attached custom dictionary entry (if applicable). **Delete** lets you remove a flashcard from a list. The **Copy** buttons let you copy cards between lists (‘all’ copies all of the cards from the right to the left list); **Move** works similarly, but also deletes the card from its former list. The up/down Move arrows allow you to reorder cards within a list.

## Edit Flashcards



This screen displays a card's statistics and allows you to change its rank, flags, and the list it's assigned to. The **Reset** button will reset all of a card's statistics. On cards which point to custom dictionary entries, an **Edit** button will appear at the bottom of the screen - click on that to change the text of the card.

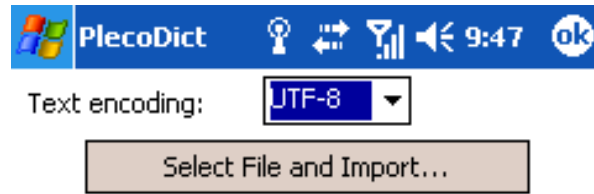
The pop-up list at the top right corner of the screen lets you select this flashcard's current list. **Char** shows the flashcard's headword characters, and **PY** its Pinyin. **Rank** lets you select the flashcard's current rank and **Flags** its current flags.

**Total** shows you the total number of correct/incorrect answers recorded with this flashcard since it was created. **Rank** is similar, but shows the correct/ incorrect answers since the flashcard entered its current rank. **Created** shows the date this card was created, and **Reviewed** the date it was last reviewed. **Hist** shows the flashcard's testing history: | indicates a correct answer and - an incorrect one, with the most recent answer the farthest to the left.

### *Import and Export*

You can use the Import and Export commands in the Manage Lists screen to share your lists of flashcard words with other users. **This feature is only recommended for advanced users** – the text encoding details can be rather tricky, especially with files converted from your PC.

### **Import**



This screen allows you to import lists of flashcard words from text file on your Pocket PC.

**Encoding** lets you choose the text encoding format - GB, Big5 or UTF-8. Note that the Byte Order Mark must be removed from the start of UTF-8 text files; otherwise, PlecoDict will attempt to treat it as a regular character. A good Unicode text editor like EmEditor ([www.emurasoft.com](http://www.emurasoft.com)) will allow you to enable/disable the Byte Order Mark in a saved text file.

Press “Select File and Import” to select a text file on your Pocket PC to import as a flashcard list.

Flashcard list files should be in the following format:

characters<tab>Pinyin<tab>definition

Use '/' followed by the list name to indicate the start of a new list; this is mandatory at the start of Memo Pad lists, and optional for other lists. Make sure to include the space after the two slashes.

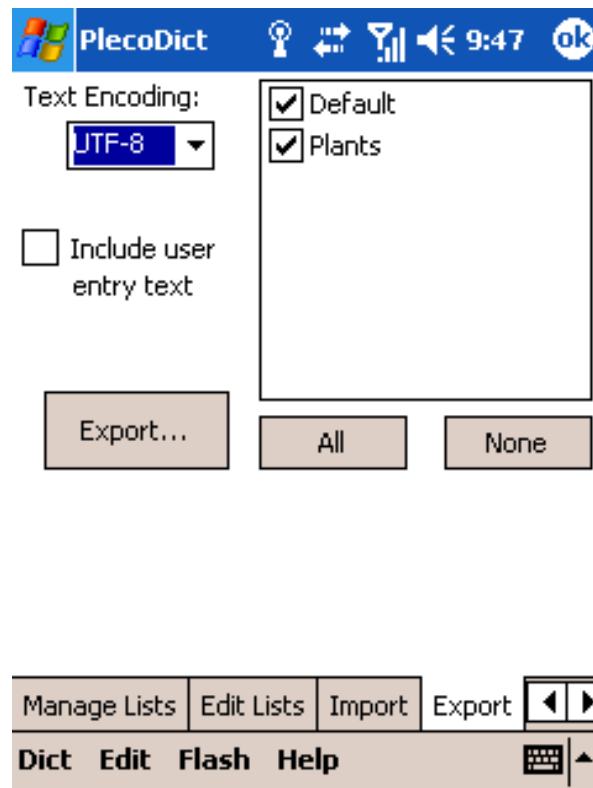
Skipping the definition field will cause PlecoDict to fill in a definition from one of its installed dictionaries (assuming it finds a match for the word). The Pinyin or character fields can also be skipped, though obviously you’ll want to keep at least one of them. Pinyin syllables should be entered with tone numbers after each syllable, just like when searching for words.

So a complete flashcard list might look like this:

```
// My Flashcards
你好 ni3hao3      Hello
再见 zai4jian4    Goodbye
早上好          zao3shang hao3
晚上好
```

All of the above text lines would be valid for flashcard import; PlecoDict would create custom dictionary entries for 你好 and 再见 (and populate them with the supplied definitions) but the other two words would be looked up in the dictionary and flashcards created based on the corresponding entries. If PlecoDict can't find a match for an incomplete word, it creates a stub entry in the custom dictionary which you can fill in later with a definition.

## Export



This screen allows you to export lists of flashcard words to a memo or text file.

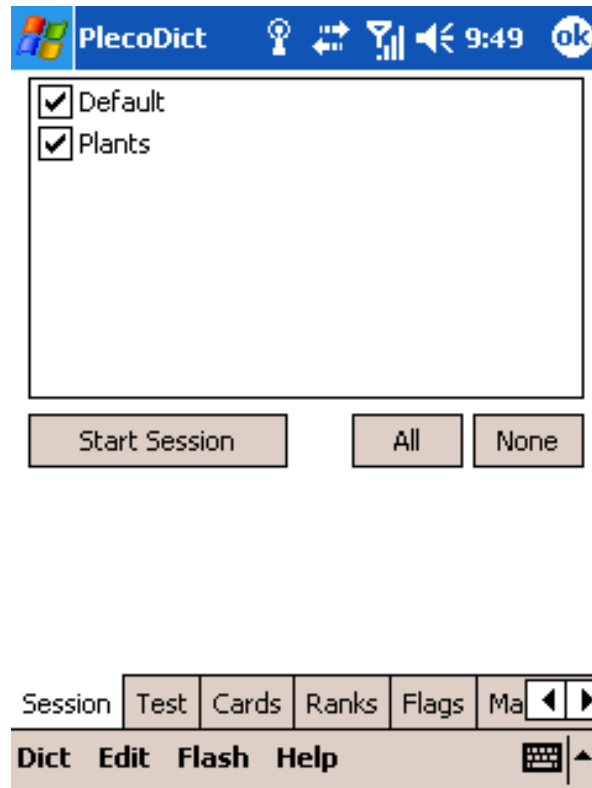
**Include user entry text** incorporates the definitions from user-created dictionary entries into the flashcard export; definitions for built-in dictionaries are blocked for copyright reasons. **Encoding** lets you select the text encoding format of the exported text, and the **checkboxes** at the right of the screen allow you to select the specific flashcard lists to export.

Press the **Export** button to choose a filename and a location to save the exported lists on your Pocket PC.



## Reviewing and Testing

Choosing **New Flashcard Session** from the Flashcards menu will bring up this screen:



This screen allows you to configure and initiate a new flashcard session.

To begin a session, first select the flashcard lists from which you want to review/test flashcards from the checkboxes at the right of the screen. (the All or None buttons help speed this up) Then, press the **Start Session** button to begin the flashcard session with the current settings.

The tabs at the bottom of the screen allow you to customize your flashcard review session. **Ranks** lets you customize the way that flashcard ranks are assigned; ranks allow you to focus your studies on the words that you need the most help with. **Flags** lets you create and rename flashcard flags; these allow you to attach additional categories to flashcards, so that you can specify (and concentrate your review on) words of a particular type or from a particular class. **Test** lets you configure the details of how flashcards are displayed during a flashcard session, and **Cards** lets you specify how PlecoDict selects the cards to test you on.

### Flashcard Session

Once you tap the Start Session button, you'll see a screen like this:

艾

Sketch box with eraser icon

0:06  
1/1

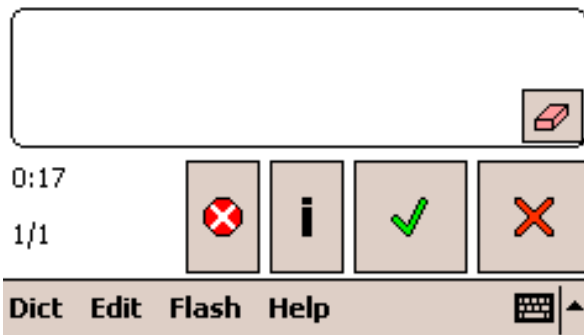
✖️ ⓘ 📖

Dict Edit Flash Help 📄 ⬆️

This is with the "Word" box in Test Settings checked and the other two boxes unchecked. (see below) You can write your guess about the meaning of the word in the sketch box below the definition; tap on the eraser clear the box's contents. Once you've made your guess, tap on the button at the bottom-right corner of the screen to reveal the entire flashcard:

艾

4ài N. ① Ch. mugwort ② Surname  
◇ V. end; stop **See also** 16yì



Tap the check or X button at the bottom right corner of the screen depending on whether your guess was correct or incorrect. The leftmost button (red octagon with an X through it) exits the current flashcard session, and the 'i' brings up the Edit Card screen for the current flashcard.

When the session ends, you'll be presented with a brief summary screen, telling you how many cards you remembered correctly/incorrectly along with the elapsed time.

## Rank Settings

Number of ranks: 6

Advance to next rank after

3 correct in a row

Retreat by 1 ranks after

3 incorrect in rank

Require flags: for rank 1

Default rank: 1 Reset All



Use this screen to configure flashcard ranks. A rank is automatically assigned to each flashcard based on your test performance (right/wrong answers) with it; cards are assigned a higher rank as your memory improves.

**Number of ranks** allows you to select the maximum rank a flashcard can reach; the default setting is 6.

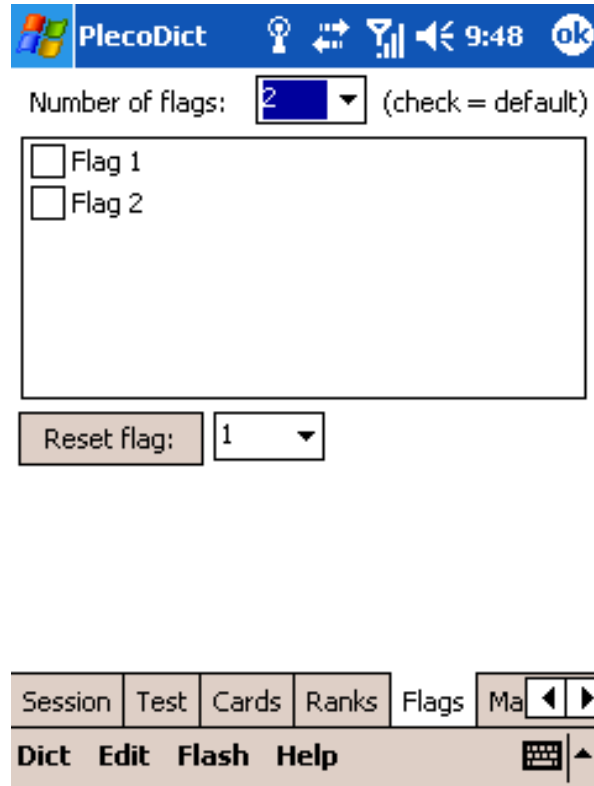
**Advance to next rank** lets you select the criteria under which a flashcard will advance to the next rank (if it's not already at the top rank). You can select a specific number of correct answers (which we'll call X) and the way the card has to reach them. **In rank** means that you must have remembered the card correctly X times since the card entered its current rank, **in a row** means you must recall the card correctly X times in a row, and **of last Y times** means that you must have recalled the card correctly on X of the last Y occasions you've tested yourself on it.

**Retreat by ... ranks** works exactly like 'Advance', except that it works with incorrect answers and can be set to move the card back by more than 1 rank.

**Require Flags for rank:** these options allow you to require that a particular flag (or combination of flags) is enabled on a card before it can advance to a particular rank. This could be used for example to require that you had memorized the Pinyin tones for a card correctly before advancing it past a particular rank; you could create a 'Pinyin Memorized' flag, disabled by default, and only enable it once you had correctly recalled a card's Pinyin tones.

**Default rank:** this lets you configure the rank which will be assigned to newly-created flashcards. **Reset all** will reset all of the lists selected in the main 'New Session' screen to this default rank.

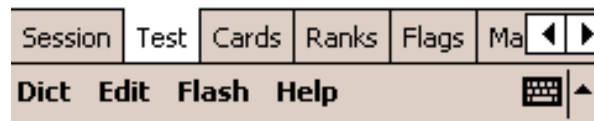
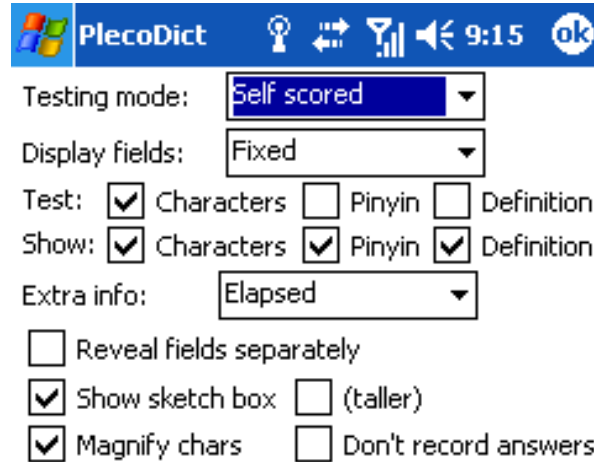
## Flag Settings



Use this screen to configure flashcard flags. Flags allow you to assign secondary characteristics to a particular flashcard, things like 'memorized Pinyin tones' or 'learned in Mrs. Walsh's class' or 'rarely-used' - you can then use these flags to narrow the focus of flashcard review sessions.

Use the **Number of flags** trigger to increase or decrease the number of flags. Check the box next to a flag to indicate that it should be enabled by default in newly-created flashcards. Tap on the name of a flag to rename it. Press **Reset Flag** to reset the selected flag to its default setting in the currently-selected flashcard lists.

## Test Settings



Use this screen to customize the way flashcards will be displayed in a review session.

**Testing Mode: Self scored** lets you tap a button after revealing each flashcard to indicate whether or not you correctly remembered the word. **Review only** avoids this and lets you simply tap on a single arrow button to advance to the next flashcard in a session.

**Display fields:** select **Fixed** to show the same fields (headword, Pinyin, or definition) for each card, or **By rank** to show a different set of fields depending on the current card's rank. The latter option allows you to use a 'graduated recall' system for learning words; for example, you can start off showing a word and its Pinyin and remembering the definition, then take away the Pinyin as your recall improves, and finally test yourself on the characters by showing the definition or Pinyin only.

In **Fixed** mode, check the boxes next to the specific fields you want to display - 'Test' specifies the fields to be shown initially, 'Show' species the fields shown after pressing the 'Reveal' button.

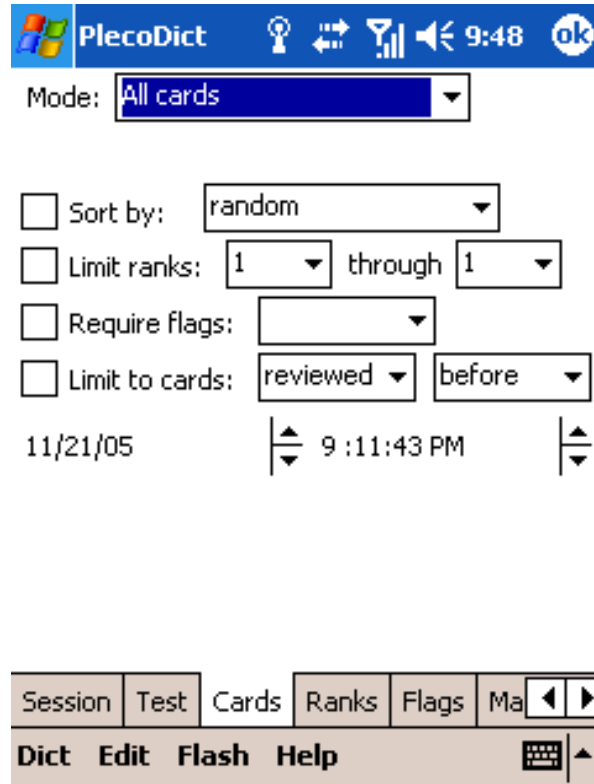
In **By rank** mode, tap the Setup button to specify the fields to be shown for each rank.

**Extra Info:** this lets you add some additional information to the flashcard screen; the elapsed session time, current time (a clock), % correct answers for the currently-displayed card, and rank and flag lists, which allow you to quickly re-set a card's rank or assign/un-assign a particular flag.

**Reveal fields separately:** this lets you reveal the character/Pinyin/definition fields of an entry separately (rather than all together with the Reveal button) - a button will appear for each field that's currently hidden, along with a general reveal button which reveals all the fields at once.

**Show sketch box** gives you an on-screen drawing pad on which you can jot down an answer before revealing it (taller increases its height for use on devices with very large displays); **Don't record answers** ignores the correct/incorrect answers you give for purposes of calculating ranks.

## Card Settings



Use this screen to customize the way that PlecoDict will select flashcards to test you on.

### Mode:

**All Cards:** in this mode, PlecoDict displays all the flashcards in the selected lists which meet the specified criteria.

**Fixed # of cards:** in this mode, PlecoDict displays a predetermined number of cards, either chosen randomly or frequency-adjusted based on their rank.

**Endless loop:** in this mode, PlecoDict will keep reviewing flashcards continuously until you decide to stop.

**Repetition spacing:** in this mode, PlecoDict only reviews cards which haven't been reviewed in a specified number of days (fixed, or customized for each rank).

**Freq adjust:** (only available in Endless Loop and Fixed # modes): specifies the way that flashcard review frequency is adjusted by rank; in 'fixed' mode, the frequency is reduced by a specified % for each successive rank, in 'custom' mode you can configure the frequency factor separately for each rank (in a separate screen).

**Spacing (days):** in Repetition spacing mode, you can use this field to set the number of days between reviews of a particular flashcard. In 'fixed' mode this number is constant between all flashcards, in 'custom' mode you can configure the number of days between reviews separately for each rank (strongly recommended).

**Sort by:** this setting lets you choose the sort order for the flashcard session - in most cases you should stick with 'random', but you can also sort by card rank, creation date, or review date.

**Limit ranks:** this setting allows you to limit the flashcard session to cards within a particular range of ranks.

**Require flags:** this setting lets you limit the flashcard session to cards with a particular flag or combination of flags enabled.

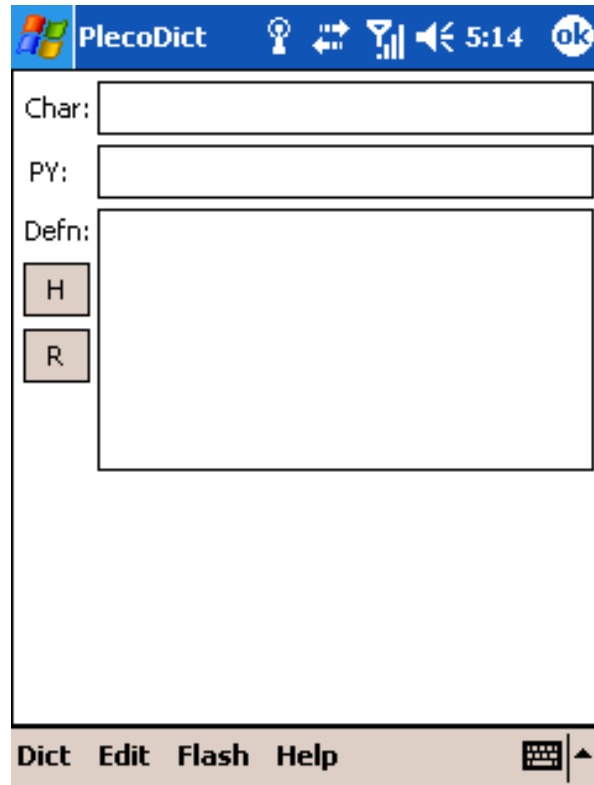
**Limit to cards:** this setting lets you limit the flashcard session to cards reviewed or created before or after a particular date/time. Set 'reviewed before' with a date well in the past to review cards that you haven't reviewed at all yet.

## Custom Dictionary Entries

PlecoDict allows you to add your very own entries to a special "user dictionary" file; this can be searched and navigated just like any other PlecoDict dictionary, and even supports wildcards.

Selecting the Add/Edit Entry button (or menu command) or the New Flashcard button will bring up the Add/Edit Entry screen:





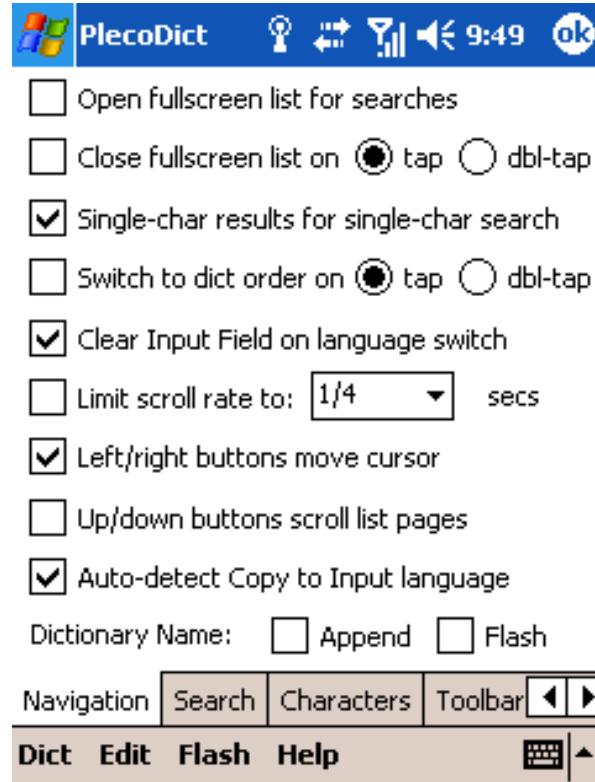
To create an entry, simply input the new entry's headword in the 'Char' field, Pinyin pronunciation (if any) in the 'PY' field, and the definition in the 'Defn' field. Bringing up this screen with an existing custom dictionary will allow you to edit the contents of these fields.

Tap the **H** button to bring up the **handwriting** recognition screen, and the **R** button for the **radical** screen - you can use these to enter Chinese characters. If a **D** button appears at the left of the screen, tap it to **delete** the current entry from the dictionary; if a **N** button appears, tap on it to leave the current entry unchanged and create a **new** (blank) entry.

PlecoDict will automatically search to the custom dictionary when it can't find a result in any other dictionary, and you can also get to it using the "Cycle Dictionaries" command.

## Preferences

## Navigation



**Open fullscreen list for searches:** with this option enabled, the Entry List will open to fullscreen mode whenever you enter a new search term.

**Close fullscreen list on tap:** with this option enabled, the fullscreen Entry List will be closed whenever you tap (or double-tap) on an entry in it.

**Single-char results for single-char search:** with this option enabled, search results for single-character and single-syllable searches will be limited to single-character entries only.

**Switch to dict order on tap:** with this option enabled, the Entry List will be switched to dictionary-order mode whenever you tap (or double-tap) on an entry in it.

**Clear Input Field on language switch:** with this option enabled, the contents of the Input Field will be erased whenever you switch languages (English-Chinese or Chinese-English).

**Limit scroll rate:** this option limits the rate through which you can scroll through entries, useful on very fast Palm OS handhelds where tapping the scroll button might move through entries too quickly.

**Left/right buttons move cursor:** with this option enabled, the left/right hardware navigation buttons on your Pocket PC will move the cursor in the Input Field left or right, rather than scrolling through entries.

**Up/down buttons scroll list pages:** with this option enabled, the up/down hardware buttons on your Pocket PC will move the Entry List down/up an entire page at a time, rather than scrolling through a single entry at a time.

**Auto-detect Copy to Input lang:** with this enabled, the dictionary will automatically detect the language of text selected with Copy to Input Field, and switch to the appropriate dictionary for the resulting search.

**Dictionary name:** Append will append the name of the current dictionary to the end of each definition, while Flash will flash the name of the current dictionary whenever you change dictionaries.

### Search



**Single/Multi-character wildcard:** These options allow you to select a particular character to act as your single- or multi-character wildcard. (see the general Help section for more info on wildcards)

**Enable erase button:** This option adds an Erase button next to the Input Field - tap on the button to clear it.

**Enable search button:** This option adds a Search button next to the Input Field - tapping it overrides any search delay and immediately begins searching. With the Require option enabled, the dictionary won't search at all unless you press it.

**Only search for exact Pinyin match:** This option limits searches to the exact Pinyin entered - typing 'ji' will only search for the Pinyin syllable 'ji' and not for other syllables like 'jiu', 'jing', 'jie', etc.

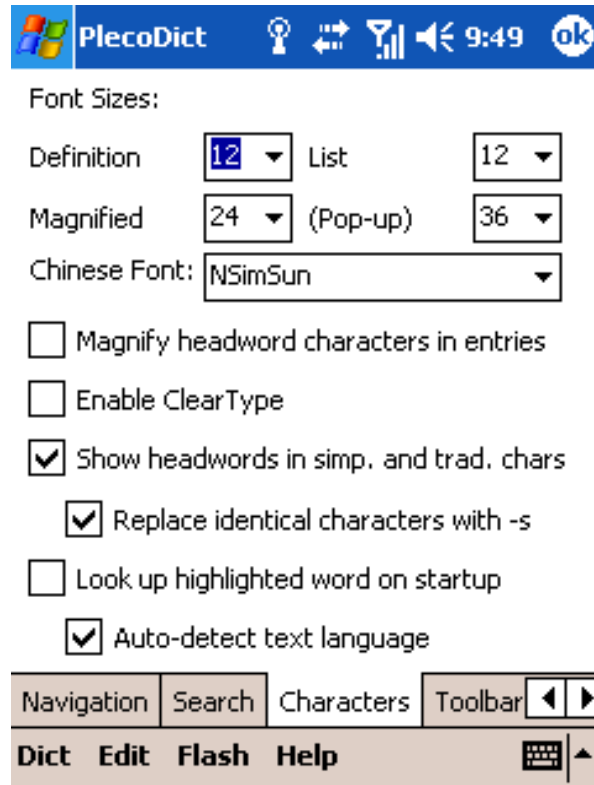
**Delay before search:** With this option enabled, the dictionary won't begin searching until the specified amount of time has passed since the last character input.

**Don't auto-search on backspace:** This option prevents the dictionary from automatically re-searching every time you delete a character from the Input Field; with this option enabled, it will only search when a new character is entered.

**Sort/cleanup multi-char results:** With this option enabled, the dictionary will alphabetically sort and remove any duplicates from multi-character search results, sometimes useful in Pinyin and wildcard searches.

**Don't switch dictionaries on search:** enable this option to prevent PlecoDict from searching other dictionaries when it can't find a match in the current one.

*Characters*



**Definition / List / Magnified / (Pop-up) font size:** use these menus to select the point size of the fonts in PlecoDict’s definition and list fields, magnified headwords (shown at the top of a dictionary definition with the “magnify headword characters in entries” option checked), and pop-up magnified characters (shown when you press the magnify button on the toolbar).

**Chinese Font:** use this list to select which of the currently-installed Chinese language fonts you want to use to display Chinese characters.

**Magnify headword characters in entries:** When this option is enabled, the headword for a Chinese-to-English entry will be displayed in large, magnified characters at the top of the definition. (you can also use the Magnify toolbar or menu command to bring up magnified versions of any highlighted characters)

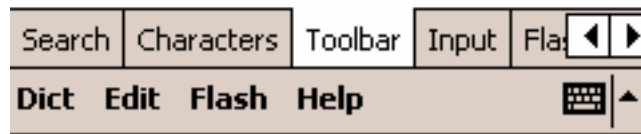
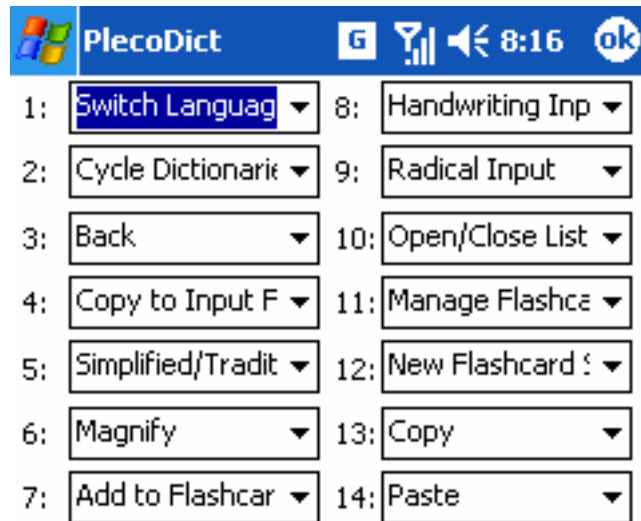
**Enable ClearType:** enable this option to have PlecoDict use Microsoft’s ClearType text rendering system (for smoother and easier-to-read characters) the next time it starts up. To have this setting apply universally, exit PlecoDict (with the Exit command in the File menu) and restart it.

**Show headwords in simp. and trad. chars:** with this option enabled, Chinese-to-English dictionary entries will include both simplified and traditional character headwords (when they differ). The character set you're not currently using will be shown in brackets. 'Replace identical chars with -s' substitutes -s for matching characters in the bracketed text.

**Look up highlighted word on startup:** enable this option and PlecoDict will automatically copy out the currently highlighted text (in whatever application you're currently running) and look it up when it starts up. This is handy for looking up unknown words in documents or on web pages.

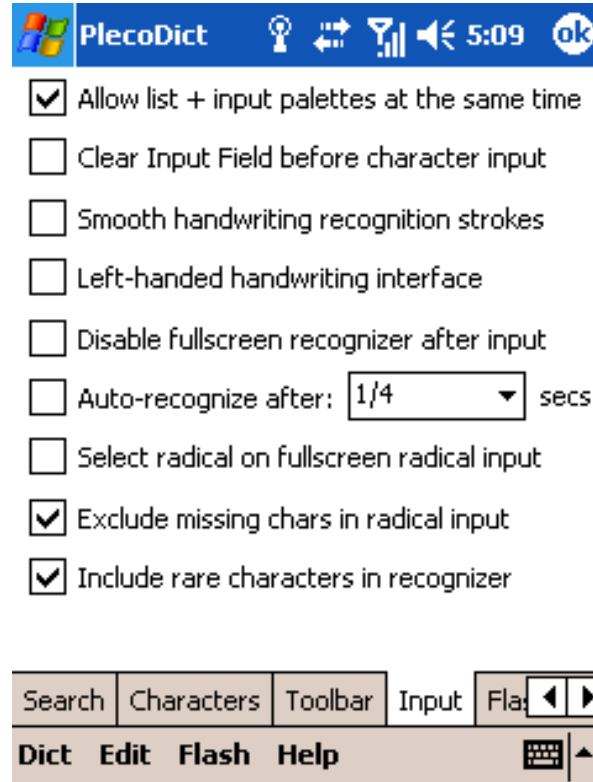
**Auto-detect text language:** with this option enabled, when PlecoDict looks up a word on startup, it will automatically detect the language of the text you're looking up, and will switch to the appropriate dictionary.

*Toolbar*



In this screen, select the function you want to assign to each toolbar position. By default, only the first 10 buttons are actually visible, but the list goes up to 14 for the benefit of customers with widescreen handhelds.

## Input



**Allow list/input palettes at the same time:** This option allows the radical/handwriting recognition input palettes and the Entry List to be on the screen at the same time.

**Clear Input Field before char input:** With this option enabled, PlecoDict will clear the entire contents of the Input Field every time you enter a character using handwriting recognition or radical input. This is useful if you want to use the dictionary to look up single characters only, or if you usually enter the second syllable of a word in Pinyin.

**Smooth handwriting recognition strokes:** Turn on this option to automatically smooth/simplify lines drawn with the handwriting recognizer.

**Left-handed handwriting interface:** this option puts the character input box at the left of the screen instead of the right in the handwriting recognizer.

**Disable fullscreen recognizer after input:** with this option enabled, the minimized (small palette on the main screen) handwriting input mode will automatically disable stroke capture each time you enter a character. You can re-enable input by tapping on the 'OFF' button.

**Auto-recognize after:** with this option enabled, PlecoDict automatically recognizes handwritten characters after the specified time has elapsed without a new stroke being entered, without the need to tap on the 'recognize' button.

**Select radical on fullscreen rad input:** with this option enabled, tapping on the radical input button brings up the radical screen in radical select mode (instead of character select mode).

**Exclude missing chars in radical input:** this option limits the radical input table only to characters which are covered by one of the installed dictionaries; disable it to see characters for which no dictionary entry is available.

**Include rare characters in recognizer:** with this option enabled, PlecoDict will look up every character that its Chinese recognizer supports. Uncheck this box to only search for frequently-used characters.

### Flashcards



**Hardware buttons:** this section allows you to configure specific hardware buttons on your Palm to perform flashcard-related functions. To associate a particular button with a flashcard function, simply tap on the dotted box next to the function name, then press the button to record it.

The **Prev/Next** buttons will also double as partial reveal buttons if you've enabled the "Reveal fields separately" option in Test Settings and are using the "Self-scored" testing mode. Pressing the **Reveal** button will jump to the next card if the card is already revealed.

**Pop-up message on flashcard add:** this option briefly flashes an alert message to notify you whenever you've successfully added a flashcard to the card list.



**Round rep spacing to nearest day:** with this enabled, the Repetition Spacing flashcard mode will test you on cards reviewed at or before 11:59:59pm on the day specified (rather than exactly the specified number of days ago).

**Don't duplicate cards in lists:** this option ensures that no list contains more than one card with the same dictionary entry.

**Delete custom entries with cards:** with this option enabled, deleting a flashcard will also delete the custom dictionary entry (if any) associated with it.

## Ordering / Demo Version

The demo version of PlecoDict is identical to the full version except for the following changes:

- Only the first few entries of each dictionary are included;
- The handwriting recognizer cannot be used to actually look up words; you can, however, write in a character and see what matches it comes up with (which allows you to confirm that the recognizer works accurately with your handwriting);
- Free and custom dictionaries cannot be used; and
- Due to licensing restrictions, the demo version includes a free font file that looks much worse on a PDA screen than the paid version font.

You can order PlecoDict by visiting <http://www.pleco.com/store/> . To order add-on dictionaries for an existing copy of PlecoDict, visit the My Orders section of our website at <http://www.pleco.com/orders.html>.

For information on how to unlock a purchased copy of PlecoDict, see the Installation section of this manual.

# Version History

**0.9 Beta 1** – first Pocket PC release.

**0.9 Beta 2** – numerous tweaks and bug fixes:

- Fixed a bug that could prevent PlecoDict from correctly finding its dictionaries on startup.
- Fixed a number of font rendering issues, including problems with Chinese characters failing to wrap correctly in the definition area.
- Fixed a couple of stability problems with the flashcard system, which in some cases could prevent it from recording or using setting changes.
- Fixed a bug that prevented some hardware buttons from registering correctly in flashcards.
- Added the ability to use the Prev/Next flashcard buttons to reveal single fields (with the appropriate test mode enabled).
- Improved button/keyboard support in the main interface; the input field should now receive keyboard input fairly consistently (even when it loses insertion point focus) and the down/up hardware buttons should consistently scroll the Entry List.
- Added icons for the Adso/LDC/CEDICT dictionary databases.
- Fixed a bug which could cause quickly-typed searches to “jump around,” often ending up with the wrong entry selected.
- Added multi-dictionary English-to-Chinese searching, so PlecoDict will search all installed English-to-Chinese dictionaries if it can’t find a word in the currently selected one.
- Fixed a bug which could cause strange behavior when a Pocket PC is turned off and on with PlecoDict running. Related to this, added a feature to automatically exit PlecoDict (with a warning message) when a flash memory card is removed from your Pocket PC – due to a bug in Windows CE, it’s impossible for us to handle this situation gracefully, so you should always make certain to exit PlecoDict before removing a flash memory card.

**0.9 Beta 3** – Many bug fixes and some feature additions:

- Added several new options to the Navigation section of Preferences, to more closely match up with the options in the Palm version.
- Improved 5-way direction pad navigation in the main dictionary interface, also to match up with the Palm version.
- Eliminated the Text Size button and menu command (which no longer made sense on scalable-font Pocket PCs) and replaced them with more detailed font size options in Preferences.
- Added an option to Test Settings to magnify headwords in flashcards – this was already possible in previous versions, but it inherited its setting from the way headwords were displayed in the main dictionary and couldn’t be configured separately.
- Preferences now remembers the last panel you were viewing.

- The Manage Flashcards and New Session screens were merged into a single tabbed panel; there are still separate menu/toolbar commands for faster access to each set of tabs, but you can now go between those screens without exiting them.
- The current dictionary choices are remembered independently for English-Chinese and Chinese-English, so when you switch languages you'll go back to whichever dictionary you were using the last time you were looking up words in that language.
- Improved the “Look up highlighted word on startup” feature so that it should now be able to copy out words correctly from Pocket Word and other rich text editors. (though it will overwrite the clipboard in the process)
- Fixed a number of bugs relating to file search/loading on Windows Mobile 5 devices, so the software should now install and run more smoothly on those, and changes to PlecoDict's preferences are saved immediately to flash memory so that they won't be lost if you have to reset your Pocket PC.
- Replaced Microsoft's built-in list view control with a custom Pleco-developed control, which should get rid of some of the weird behavior in the radical/handwriting input grids and the Entry List.
- The Input Field should now retain the keyboard focus in the main screen all the time, so no more typing a word only to discover that it didn't actually go where it was supposed to go.
- Fixed several issues with fonts – the new PlecoPinyinBold font should ensure that 3<sup>rd</sup>-tone Pinyin characters look the same as other characters in definitions, and a new size-matching algorithm should help those characters blend in better in the Entry List as well. (though sadly there doesn't seem to be any way to get them to match perfectly) And Pinyin/definition-only flashcards should now display in the correct font.
- Fixed a bug that could cause flashcard “in a row” calculations to be done incorrectly (so that in some cases a card might be promoted sooner than it was supposed to be).
- Fixed a bug that could cause multiple user dictionaries to be created if you unlocked the software multiple times.
- Numerous other minor bug fixes and tweaks.

## 1.0 – first official release

- Fixed a bug that could cause flashcard/custom dictionary data files to be corrupted if a Pocket PC was reset while PlecoDict was running.
- Fixed a bug that could prevent PlecoDict from correctly locating its data files if installed on a non-English Windows Mobile 5 system.
- Fixed a bug that prevented the toolbar from resizing correctly when devices were switched between portrait and landscape mode while PlecoDict was running.
- Fixed a bug that could leave visual garbage behind when magnifying characters using a menu command (or from navigating to a different dictionary entry while displaying magnified characters).
- Added progress counters to the Import/Export screens.
- Eliminated (most) horizontal scrollbars in Edit Lists.
- Improved display of the demo-version font.

- Enabled handwriting recognition in the demo version (now that we have permission to do so).
- Fixed a bug that could cause the selected radical to appear as an empty box in the palette version of the radical input screen.
- Fixed a bug that could create extra lines when drawing a line in the handwriting input or flashcard sketch box which began outside of the drawing area.
- Fixed a bug that could cause the Entry List resize trigger (and possibly the list itself) to move when dragging the stylus past it.
- Keyboard now comes up automatically in Edit Entry and List Properties screens.
- Updated Device ID calculation algorithm to work correctly with all Windows Mobile 5 devices.
- Several other minor bug fixes and tweaks.

### **1.0.3** (1.0.1 and 1.0.2 were skipped to sync up with the Palm version)

- Reverse radical lookup (where you highlight a character and bring up the radical screen to get its radical) should now work correctly.
- Fixed a couple of rare user DB-related crashes.
- Session summary displays whenever you exit flashcards (except in review-only mode).
- Flashcard correct percentages should now be calculated correctly.
- English-to-Chinese search should now work correctly in the demo version.
- Slightly more informative demo version warning message in entries.
- Keyfiles will now be deleted even if they're read-only.

# Abbreviations Used

## ABC Chinese-English Comprehensive Dictionary:

- ab.** abbreviation 缩写  
**acct.** accounting 会计  
**adv.** adverb 副词  
**agr.** agriculture 农业  
**archeo.** archeology 考古学  
**archi.** architecture 建筑学  
**astr.** astronomy 天文学  
**a.t.** abstruse term 深奥词  
**attr.** attributive 定语  
**aux.** auxiliary verb 助动词  
**bf.** bound form 粘着词素  
**bio.** biology 生物学  
**Budd.** Buddhism, Buddhist 佛教  
**ca.** about; approximately 大约  
**CCP** Chinese Communist Party 中国共产党  
**cent.** century 世纪  
**Ch.** China, Chinese 中国  
**Ch. med.** Chinese medicine 中医  
**chem.** chemistry 化学  
**cmp.** complement 补语  
**comp.** computer 计算机; 电脑  
**coll.** Beijing colloquial 口语  
**com.** commerce 商业  
**conj.** conjunction 连词  
**cons.** construction 句型  
**court.** courteous 敬词  
**Cult. Rev.** Cultural Revolution 文革  
**d.** died 逝世  
**Dao.** Daoism, Daoist 道教  
**derog.** derogatory 贬义词  
**econ.** economics 经济  
**edu.** education 教育  
**elec.** electrical engineering 电工  
**en.** environment 环境  
**esp.** especially 特指  
**f.** female 女性  
**f.e.** fixed expression 惯用语  
**fig.** figurative(ly) 隐喻  
**forest.** forestry 森林  
**geog.** geography 地理  
**geol.** geology 地质  
**hist.** history 历史  
**humb.** humble 谦词  
**id.** idiomatic saying 含义不明语  
**inf.** infix 中缀  
**intj.** interjection 感叹  
**Jp.** Japan, Japanese 日本  
**KMT** Kuomintang/Guomindang 国民党  
**lg.** language, linguistics 语言  
**lit.** literal(ly) 字面义  
**liv.** livestock husbandry 畜牧  
**loan** loan word 外来词  
**log.** logic 逻辑  
**m.** measure 量词  
**mach.** machinery 机械  
**math.** mathematics 数学  
**med.** medicine 医学  
**met.** meteorology 气象  
**metal.** metallurgy 冶金  
**mil.** military 军事  
**min.** mining 矿业  
**m.p.** modal particle 语气词  
**mus.** music 音乐  
**n.** noun 名词  
**n.p.** noun phrase 名词词组  
**num.** number 数词  
**on.** onomatopoeia 象声词  
**orig.** original(ly) 原意  
**paleo.** paleontology 古生物学  
**phil.** philosophy 哲学  
**photo.** photography 摄影  
**phy.** physics 物理  
**phys.** physiology 生理学

**pol.** politics 政治  
**pr.** pronoun 代词  
**PRC** People's Republic of China 中华人民共和国  
**pref.** prefix 前缀  
**prep.** preposition 介词  
**print.** printing 印刷  
**prov.** province 省  
**psy.** psychology 心理学  
**p.w.** place word 处所词  
**rel.** religion 宗教  
**r.f.** reduplicated form 重叠词  
**r.v.** resultative verb 结果补语词  
**sb.** somebody 某人  
**sig.** signifying, signaling 表示  
**soc.** sociology 社会学  
**s.p.** subordinating particle 从属词  
**sth.** something 某事

**suf.** suffix 后缀  
**sur.** surveying 测绘  
**s.v.** stative verb 形容词  
**thea.** theater 戏剧  
**topo.** topolect, non-Mandarin 方言  
**trad.** traditional 传统  
**traf.** traffic, communication 交通  
**TW** Taiwan 台湾  
**txtl.** textiles 纺织  
**usu.** usually 通常  
**v.** verb 动词  
**v.m.** verbal measure word 动量词  
**v.p.** verb phrase 动词词组  
**v.o.** verb-object 动宾离合词  
**vs.** versus 对应  
**vulg.** vulgar 俗语  
**wr.** writing, wenyān 文言  
**zoo.** zoology 动物学

#### **NWP English-Chinese Pinyin Dictionary:**

**n.** noun 名词  
**pron.** pronoun 代词  
**v.** verb 动词  
**a.** adjective 形容词  
**ad.** adverb 副词  
**conj.** conjunction 连词

**prep.** preposition 介词  
**aux. v.** auxiliary verb 助动词  
**num.** numeral 动次  
**sb.** somebody 某人  
**sth.** something 某事  
**&** and 和

#### **Oxford Concise Chinese-English Dictionary:**

(名)名词 noun  
(动)动词 verb  
(形)形容词 adjective  
(副)副词 adverb  
(介)介词 preposition  
(数)数词 numeral  
(代)代词 pronoun  
(叹)叹词 interjection  
(量)量词 measure word  
(象)象声词 onomatopoeia  
(连)连词 conjunction

(助)助词 particle  
〈口〉口语 colloquial  
〈简〉简称 abbreviation  
〈旧〉旧时用语 archaic  
〈婉〉婉辞 euphemism  
〈套〉套语 polite formula  
〈敬〉敬辞 polite expression  
〈书〉书面语 literary  
〈谦〉谦辞 humble expression  
〈贬〉贬义 derogatory

## Oxford Concise English-Chinese Dictionary:

**abbr** = abbreviation 缩略语

**adj** = adjective 形容词

**adv** = adverb 副词

**aux v** = auxiliary verb 助动词

**[C]** = countable 可数的

**conj** = conjunction 连接词

**fem** = feminine 阴性

**[I]** = intransitive 不及物的

**interj** = interjection 感叹词

**modal v** = modal verb 情态动词

**n** = noun 名词

**P** = proprietary 专利

**pl** = plural 复数

**pp** = past participle 过去分词

**prep** = preposition 介词

**pres part** = present participle 现在分词

**pron** = pronoun 代词

**pt** = past tense 过去时

**rel pron** = relative pronoun 关系代词

**sb** = somebody 某人

**sing** = singular 单数

**sth** = something 某事物

**[T]** = transitive 及物的

**[U]** = uncountable 不可数的

**US** = American 美语

**v** = verb 动词

## Cheng & Tsui English-Chinese Lexicon of Business Terms

**adj.** adjective

**adv.** adverb

**n.** noun

**L.** Latin

**v.** verb

**pref.** prefix

**prep.** preposition

[证] 证券 / stock

[法] 法律 / law

[会] 会计 / accounting

[不动] 不动产 / real estate

[保] 保险 / insurance

[税] 税务 / tax



# Copyrights

**Pleco Dictionary Engine** Copyright © 2002-6 Pleco Software Incorporated.

**Hanwang Recognition Engine** Copyright © 2003-5 Hanwang Technology Co, Ltd.

**ABC Chinese-English Comprehensive Dictionary** Copyright © 2003 University of Hawai'i Press. John DeFrancis, developer/editor; [Wenlin Institute](#), assistant developer.

**NWP English-Chinese Pinyin Dictionary** Copyright © 1998 by New World Press, Beijing, China. Meng Fanling, editor.

**Oxford Concise English & Chinese Dictionary** 3/e © Oxford University Press and The Commercial Press 1996, 1999, 2003. "Oxford" and "Oxford University Press" are trademarks of Oxford University and are used by Pleco under license.

**Cheng & Tsui English-Chinese Lexicon of Business Terms** Copyright © 2002 by Cheng & Tsui Company.

# Software License

**NOTICE:** THIS SOFTWARE END USER LICENSE AGREEMENT (“EULA”) IS A LEGAL AGREEMENT BETWEEN YOU (EITHER AS AN INDIVIDUAL OR AN ENTITY) AND PLECO SOFTWARE INCORPORATED (“PLECO”). PLEASE READ IT CAREFULLY BEFORE COMPLETING THE INSTALLATION PROCESS AND USING THE SOFTWARE.

THIS AGREEMENT PROVIDES A LICENSE TO USE THE SOFTWARE AND CONTAINS WARRANTY INFORMATION AND LIABILITY DISCLAIMERS. BY INSTALLING AND USING THE SOFTWARE, YOU ARE CONFIRMING YOUR ACCEPTANCE OF THE SOFTWARE AND AGREEING TO BECOME BOUND BY THE TERMS OF THIS AGREEMENT. IF YOU DO NOT AGREE TO BE BOUND BY THESE TERMS, THEN DO NOT INSTALL THE SOFTWARE AND RETURN THE SOFTWARE TO PLECO.

## 1. License Grants & Restrictions

The licenses granted in this Section 1 are subject to the terms and conditions set forth in this EULA:

1. You may install and use the Software only on a single computer.
2. You may make one copy of the Software solely for backup purposes. Any back-up copy must contain all copyright notices and any other proprietary legends on the original copy of the Software. You may not sell or transfer any copy of the Software made for backup purposes.
3. Your license rights under this EULA are non-exclusive and non-assignable.
4. Other than as set forth in Section 2, you may *not* make copies of the Software, or electronically transfer the Software from one computer to another except for the purposes of installing it under Section 1.
5. You may *not* alter, merge, modify, adapt, translate, decompile, reverse engineer, disassemble, or otherwise reduce the Software to a human-perceivable form.
6. You may *not* rent, lease, or sublicense the Software.
7. You may *not* create derivative works based upon the Software.
8. You may *not* export the Software into any country to which such export is prohibited by the United States Export Administration Act.
9. In the event that you fail to comply with this EULA, PLECO and its suppliers may, in addition to seeking any damages, terminate the license. Upon termination, you must destroy all copies of the Software (with all other rights of both parties and all other provisions of this EULA surviving any such termination).

## 2. Ownership

The foregoing license gives you limited license to use the Software. PLECO and its suppliers retain all right, title and interest, including all copyright and intellectual property rights, in and to, the Software, and all copies thereof. The software is protected by the copyright laws of the United States and other countries. All rights not expressly granted in this EULA, are reserved by PLECO and its suppliers.

### **3. LIMITED WARRANTY AND DISCLAIMER**

1. PLECO warrants that, for a period of ninety (90) days, the Software will perform in substantial conformance with published specifications for the Software.
2. EXCEPT AS SET FORTH IN THE FOREGOING LIMITED WARRANTY WITH RESPECT TO THE SOFTWARE, PLECO DISCLAIMS ALL OTHER WARRANTIES AND REPRESENTATIONS, WHETHER EXPRESS, IMPLIED, OR OTHERWISE, INCLUDING THE WARRANTIES OF MERCHANTABILITY OR FITNESS FOR A PARTICULAR PURPOSE. ALSO, THERE IS NO WARRANTY OF NON-INFRINGEMENT AND TITLE OR QUIET ENJOYMENT. PLECO DOES NOT WARRANT THAT THE SOFTWARE IS ERROR-FREE OR WILL OPERATE WITHOUT INTERRUPTION. THE SOFTWARE IS NOT DESIGNED, INTENDED OR LICENSED FOR USE IN HAZARDOUS ENVIRONMENTS REQUIRING FAIL-SAFE CONTROLS.
3. IF APPLICABLE LAW REQUIRES ANY WARRANTIES WITH RESPECT TO THE SOFTWARE, ALL SUCH WARRANTIES ARE LIMITED IN DURATION TO NINETY (90) DAYS FROM THE DATE OF DELIVERY.
4. NO ORAL OR WRITTEN INFORMATION OR ADVICE GIVEN BY PLECO SHALL CREATE A WARRANTY OR IN ANY WAY INCREASE THE SCOPE OF ANY WARRANTY PROVIDED HEREIN.
5. SOME STATES DO NOT ALLOW THE EXCLUSION OF IMPLIED WARRANTIES, SO THE ABOVE EXCLUSION MAY NOT APPLY TO YOU. THIS WARRANTY GIVES YOU SPECIFIC LEGAL RIGHTS AND YOU MAY ALSO HAVE OTHER LEGAL RIGHTS THAT VARY FROM STATE TO STATE.

### **4. Exclusive Remedy**

Your exclusive remedy is to return the Software to PLECO. Provided that any non-compliance with the above warranty is reported in writing to PLECO no more than ninety (90) days following delivery to you, PLECO will use reasonable commercial efforts to supply you with a replacement copy of the Software that substantially conforms to published specifications, provide a replacement for defective media, or refund to you your purchase price for the Software, at its option. PLECO shall have no responsibility if the Software has been altered in any way, or if the media has been damaged by misuse, accident, abuse, modification or misapplication. Any such misuse, accident, abuse, modification or misapplication of the Software will void the warranty above. THIS REMEDY IS THE SOLE AND EXCLUSIVE REMEDY AVAILABLE TO YOU FOR BREACH OF EXPRESS OR IMPLIED WARRANTIES WITH RESPECT TO THE SOFTWARE.

### **5. LIMITATION OF LIABILITY**

1. PLECO SHALL NOT BE LIABLE TO YOU OR ANY THIRD PARTY FOR ANY INDIRECT, SPECIAL, INCIDENTAL, PUNITIVE, COVER OR

CONSEQUENTIAL DAMAGES (INCLUDING, BUT NOT LIMITED TO, DAMAGES FOR THE INABILITY TO USE EQUIPMENT OR ACCESS DATA, LOSS OF BUSINESS, LOSS OF PROFITS, BUSINESS INTERRUPTION OR THE LIKE), ARISING OUT OF THE USE OF, OR INABILITY TO USE, THE SOFTWARE AND BASED ON ANY THEORY OF LIABILITY INCLUDING BREACH OF CONTRACT, BREACH OF WARRANTY, TORT (INCLUDING NEGLIGENCE), PRODUCT LIABILITY OR OTHERWISE, EVEN IF PLECO OR ITS REPRESENTATIVES HAVE BEEN ADVISED OF THE POSSIBILITY OF SUCH DAMAGES AND EVEN IF A REMEDY SET FORTH HEREIN IS FOUND TO HAVE FAILED IN ITS ESSENTIAL PURPOSE.

2. PLECO'S TOTAL LIABILITY TO YOU FOR ACTUAL DAMAGES FOR ANY CAUSE WHATSOEVER WILL BE LIMITED TO THE AMOUNT YOU PAID FOR THE SOFTWARE.
3. SOME STATES DO NOT ALLOW THE LIMITATION OR EXCLUSION OF LIABILITY FOR INCIDENTAL OR CONSEQUENTIAL DAMAGES, SO THE ABOVE LIMITATION OR EXCLUSION MAY NOT APPLY TO YOU AND YOU MAY ALSO HAVE OTHER LEGAL RIGHTS THAT VARY FROM STATE TO STATE.
4. THE FOREGOING LIMITATIONS ON LIABILITY ARE INTENDED TO APPLY TO THE WARRANTIES AND DISCLAIMERS ABOVE AND ALL OTHER ASPECTS OF THIS EULA.

## **6. U.S. GOVERNMENT RESTRICTED RIGHTS LEGEND**

This Software and the documentation are provided with "RESTRICTED RIGHTS" applicable to private and public licenses alike. Without limiting the foregoing, use, duplication, or disclosure by the U.S. Government is subject to restrictions as set forth in this EULA and as provided in DFARS 227.7202-1(a) and 227.7202-3(a) (1995), DFARS 252.227-7013 (c)(1)(ii)(OCT 1988), FAR 12.212(a)(1995), FAR 52.227-19, or FAR 52.227-14, as applicable.

## **7. General**

This EULA shall be governed by the internal laws of the State of New York. In each case this EULA shall be construed and enforced without regard to the United Nations Convention on the International Sale of Goods.

This EULA contains the complete agreement between the parties with respect to the subject matter hereof, and supersedes all prior or contemporaneous agreements or understandings, whether oral or written. You agree that any varying or additional terms contained in any purchase order or other written notification or document issued by you in relation to the Software licensed hereunder shall be of no effect. The failure or delay of PLECO to exercise any of its rights under this EULA or upon any breach of this EULA shall not be deemed a waiver of those rights or of the breach.

If any provision of this EULA shall be held by a court of competent jurisdiction to be contrary to law, then that provision will be enforced to the maximum extent permissible and the remaining provisions of this EULA will remain in full force and effect.

All questions concerning this EULA shall be directed to PLECO.

This EULA does not authorize you to use the trademarks of PLECO or its suppliers.

Pleco Software Incorporated

2005-09-01

(No lawyers were harmed in the making of this license agreement. We did cut off their bottled water supply after they racked up a few dozen billable hours playing Solitaire, but drinking tap water was actually good for them.)